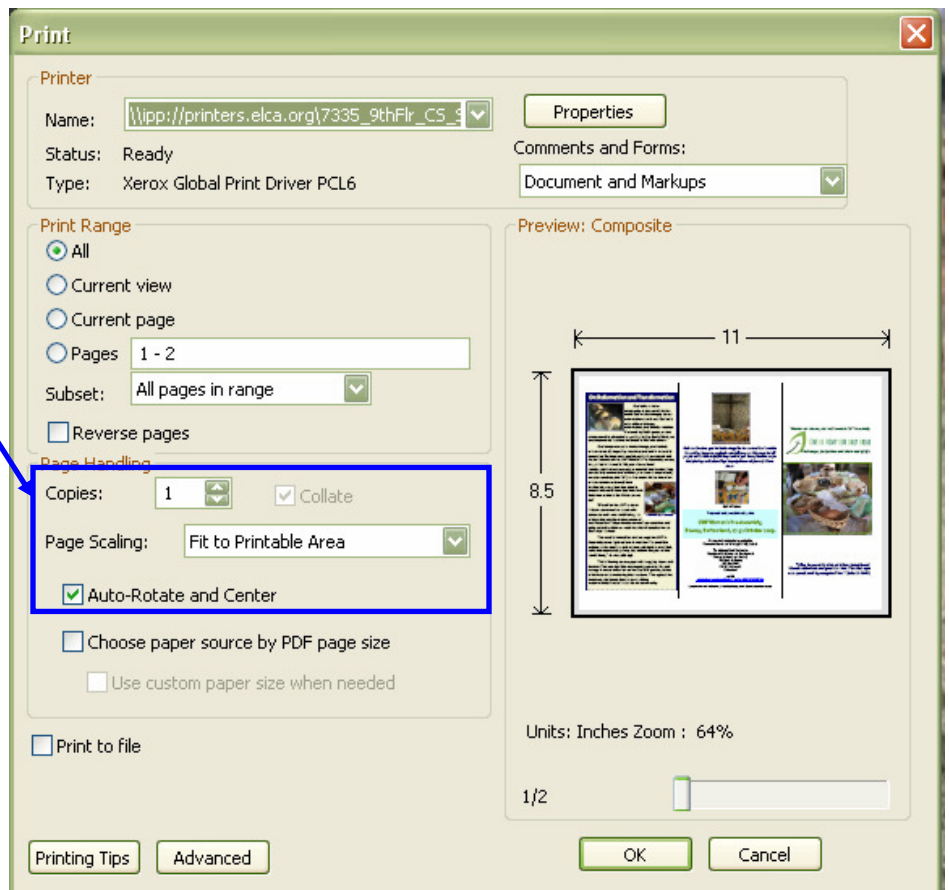


1. Select File > Print

2. Under Page Handling > Page Scaling > Fit to Printable Area



3. Check Auto-Rotate and Center box

Other tips:

-Select the *size paper* you want to use (i.e. letter, tabloid, A3, A4, etc.)

-Select *Double Sided Printing*

-Set page to "Flip on Short Edge" or "Flip Over" to avoid printing one side upside down.

-Run a test print before printing a large number of copies.

