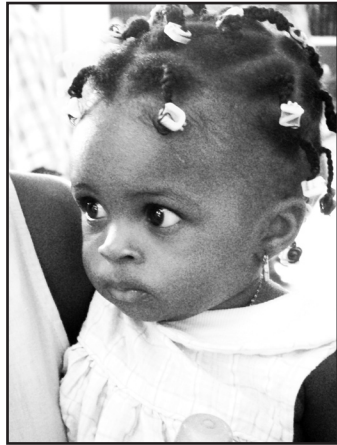


Big hope for little Schniley

www.elca.org/hunger

There are big needs in the small country of Haiti. According to the Bread for the World Institute's Hunger 2008 Annual Report,* almost half of the population is malnourished, more than half live under the international poverty line (\$1 a day), and the child mortality rate is 12 percent. There is big hope in Haiti, too, hope that your gifts to the ELCA World Hunger Appeal, implemented through the Lutheran World Federation (LWF), help make possible.



HAITI

There is big hope for little Schniley's future. Schniley, born at a hospital outside of Port au Prince, was abandoned at birth. Thankfully, Schniley has a loving new home and her adoptive mother is an LWF program participant and teacher.

The LWF works in partnership with community groups and non-governmental organizations to establish schools and microfinance programs. The LWF is also instrumental in partnering with local farmers and agencies to provide agricultural development in Haiti, such as a coffee-farming project in Thiotte and a banana plantation project near Cite Soleil. Your gifts to the ELCA World Hunger Appeal help fund these sustainable economic opportunities, opportunities that make big dreams and big hopes possible.

**Hunger 2008: Working Harder for Working Families (18th Annual Report on the State of World Hunger) © 2008 Bread for the World Institute.*

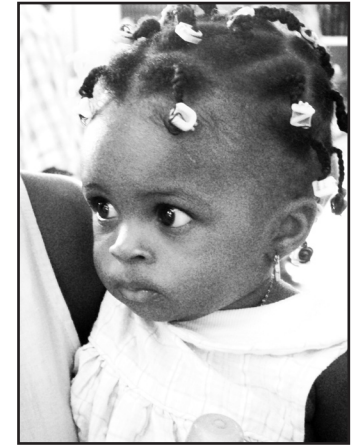


ELCA World Hunger Appeal
Evangelical Lutheran Church in America
God's work. Our hands.

Big hope for little Schniley

www.elca.org/hunger

There are big needs in the small country of Haiti. According to the Bread for the World Institute's Hunger 2008 Annual Report,* almost half of the population is malnourished, more than half live under the international poverty line (\$1 a day), and the child mortality rate is 12 percent. There is big hope in Haiti, too, hope that your gifts to the ELCA World Hunger Appeal, implemented through the Lutheran World Federation (LWF), help make possible.



HAITI

There is big hope for little Schniley's future. Schniley, born at a hospital outside of Port au Prince, was abandoned at birth. Thankfully, Schniley has a loving new home and her adoptive mother is an LWF program participant and teacher.

The LWF works in partnership with community groups and non-governmental organizations to establish schools and microfinance programs. The LWF is also instrumental in partnering with local farmers and agencies to provide agricultural development in Haiti, such as a coffee-farming project in Thiotte and a banana plantation project near Cite Soleil. Your gifts to the ELCA World Hunger Appeal help fund these sustainable economic opportunities, opportunities that make big dreams and big hopes possible.

**Hunger 2008: Working Harder for Working Families (18th Annual Report on the State of World Hunger) © 2008 Bread for the World Institute.*



ELCA World Hunger Appeal
Evangelical Lutheran Church in America
God's work. Our hands.