

ELCA Churchwide Organization

2007 Financial Report



**Church Council of the
Evangelical Lutheran Church in America
April 11-13, 2008**

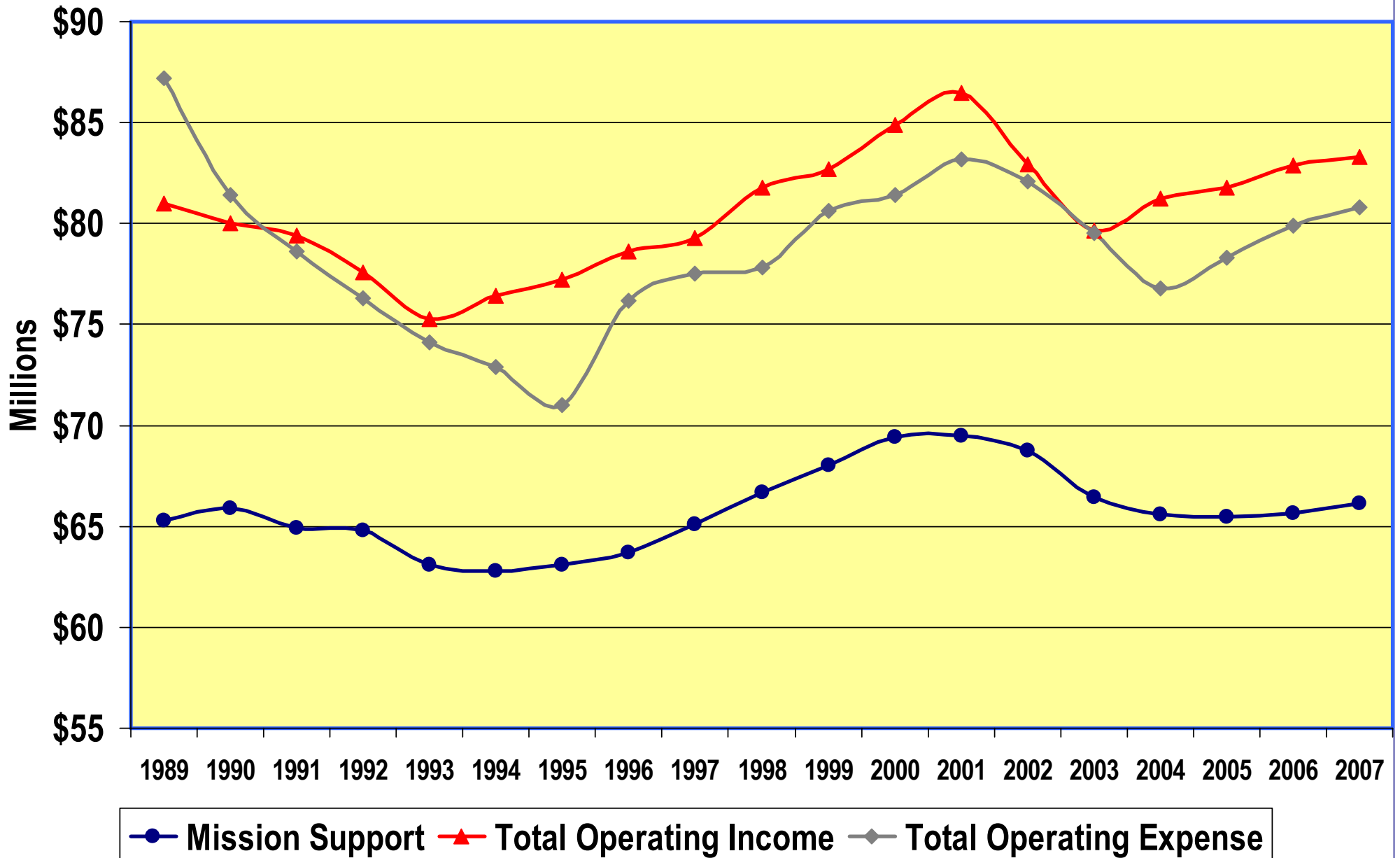
2007 Summary of Revenue and Expenses (In Thousands)

	Actuals	Variances From:	
		Budget	Prior Year
Revenue			
Mission Support	\$66,129	\$329	\$465
Other	17,176	1,554	(172)
Total Revenue	\$83,305	\$1,883	\$293
Expenses	\$80,783	\$639	(\$1,163)
Net Revenue	\$2,522	\$2,522	(\$870)

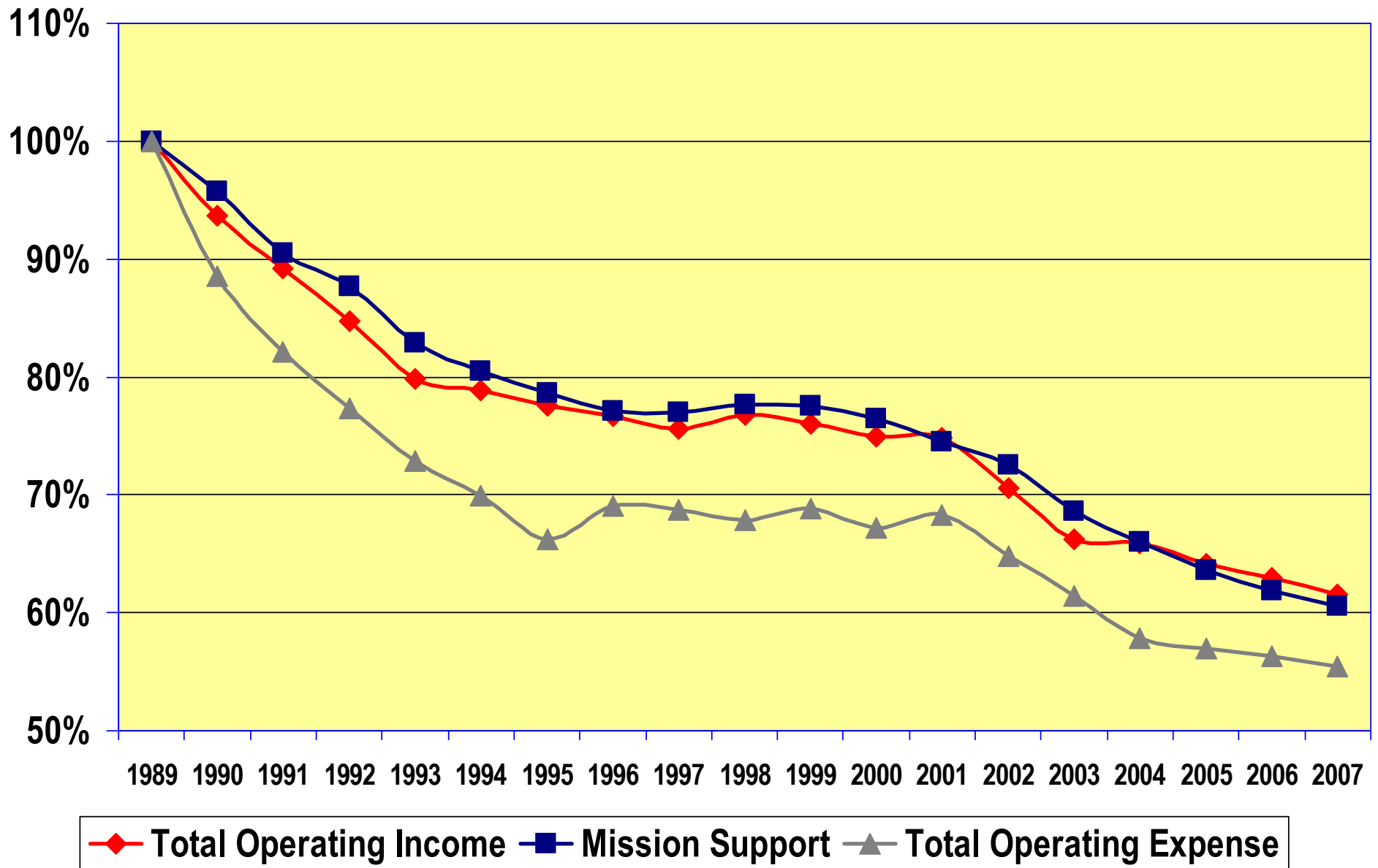
2007 Current Fund Revenue

	ACTUALS	VARIANCES FROM:	
		BUDGET	PRIOR YR
MISSION SUPPORT	\$66,129,117	\$329,117	\$465,086
MISSIONARY SPONSORSHIP	\$3,828,427	(\$171,573)	(\$23,685)
BEQUESTS & TRUSTS	\$2,331,007	(\$368,993)	(\$1,160,106)
INVESTMENT INCOME	\$2,730,165	\$1,480,165	\$369,993
ENDOWMENT	\$2,212,487	\$40,487	\$120,500
MISSION INVESTMENT FUND	\$1,500,000	\$0	\$0
VISION FOR MISSION	\$1,211,077	(\$38,923)	(\$13,326)
OTHER	\$3,362,733	\$612,733	\$535,004

Operating Income vs. Operating Expense 1989 - 2007



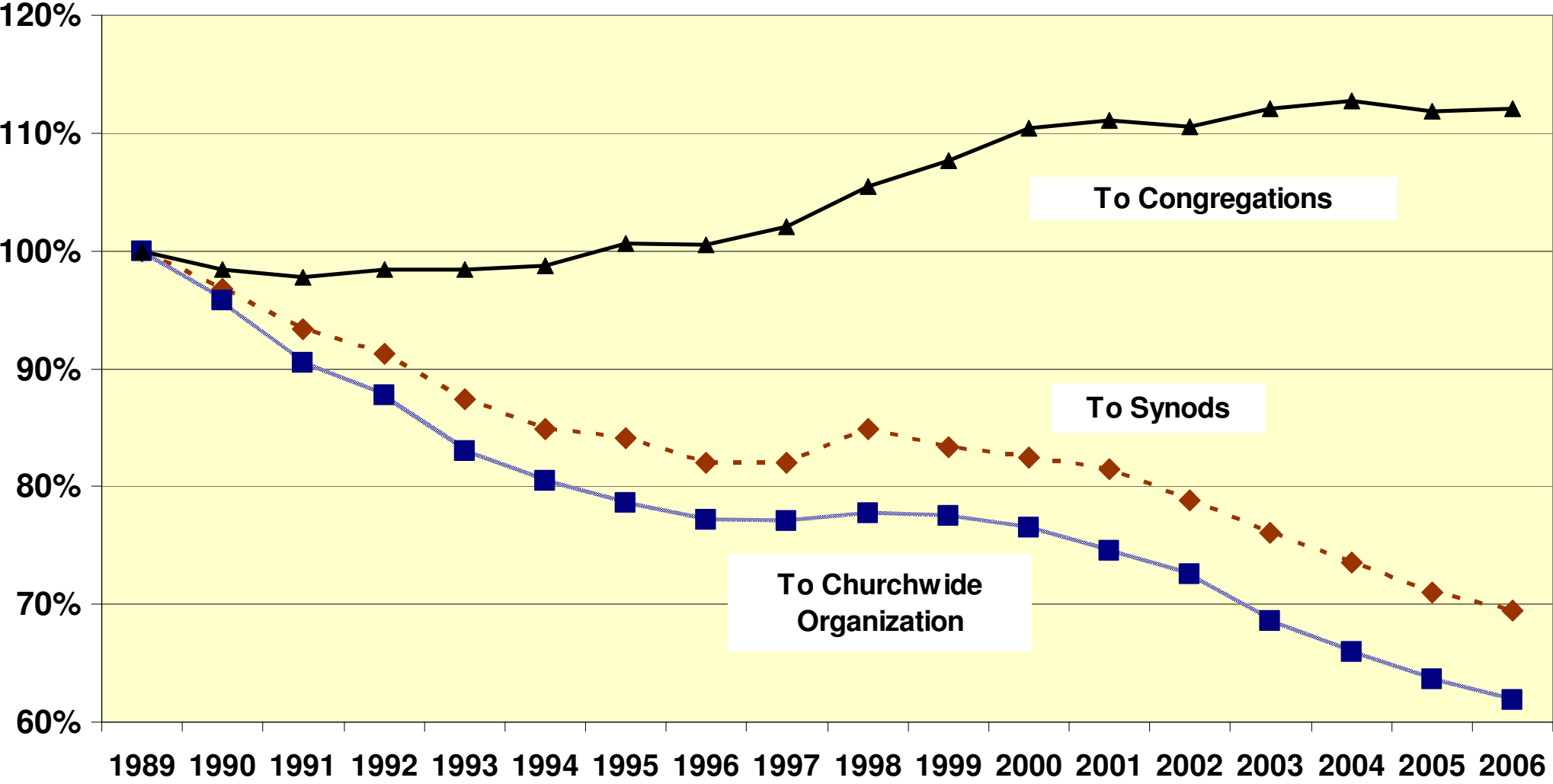
Operating Income Vs. Operating Expense Using Inflation Adjusted Figures 1989 - 2007



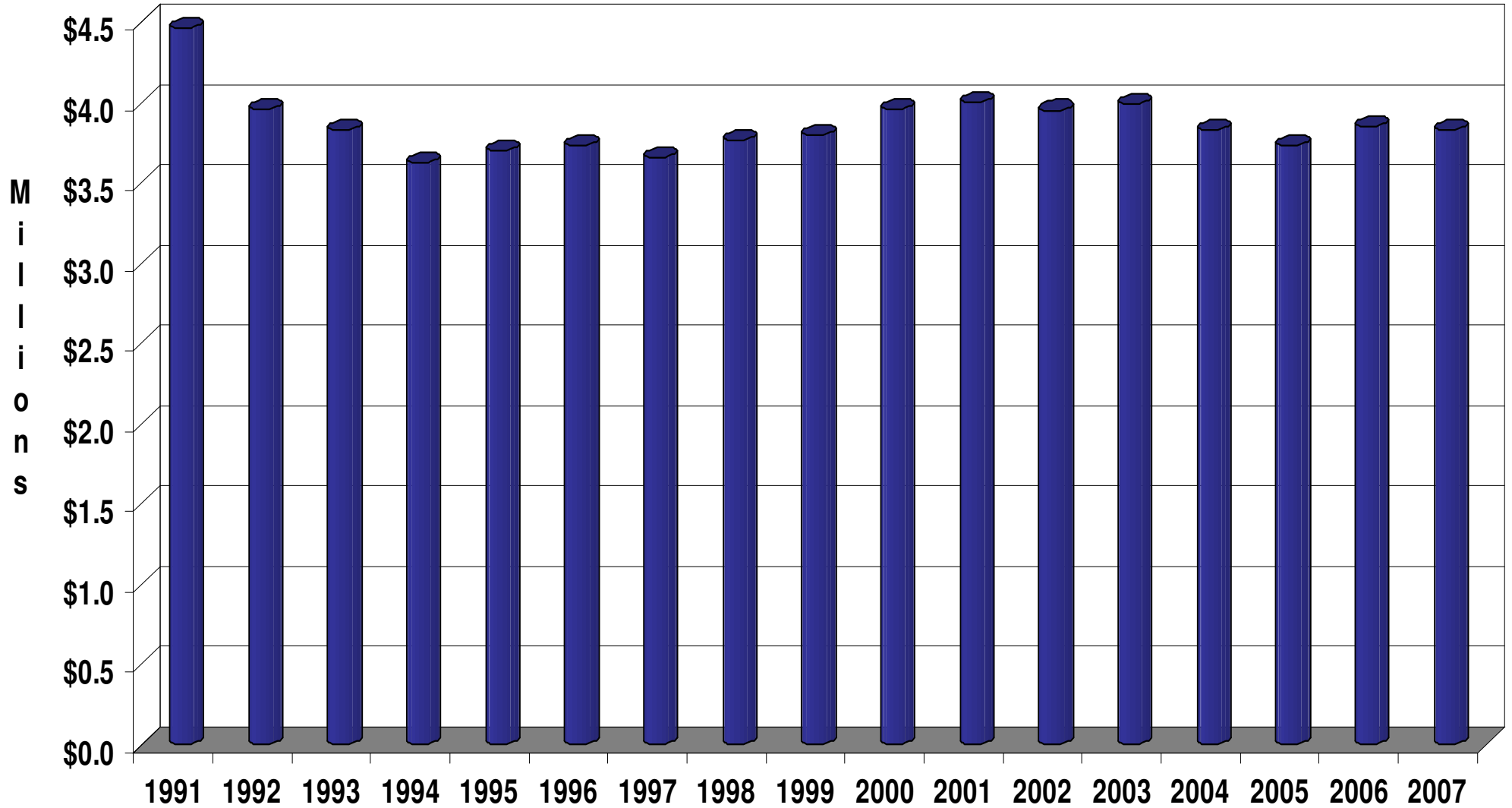
Change in Mission Support Receipts

Adjusted for Inflation

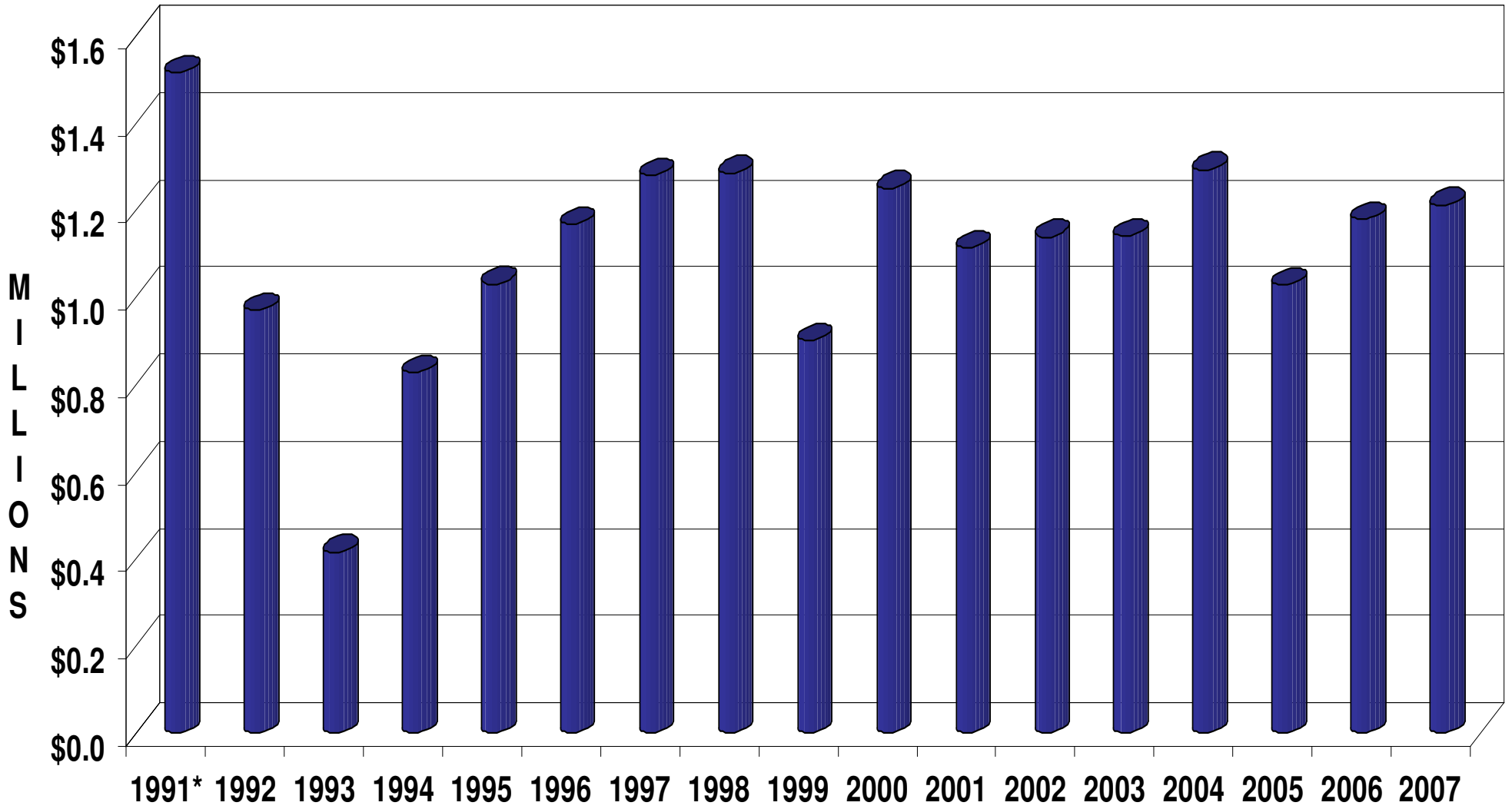
1989 - 2006



Missionary Sponsorship History 1991 – 2007



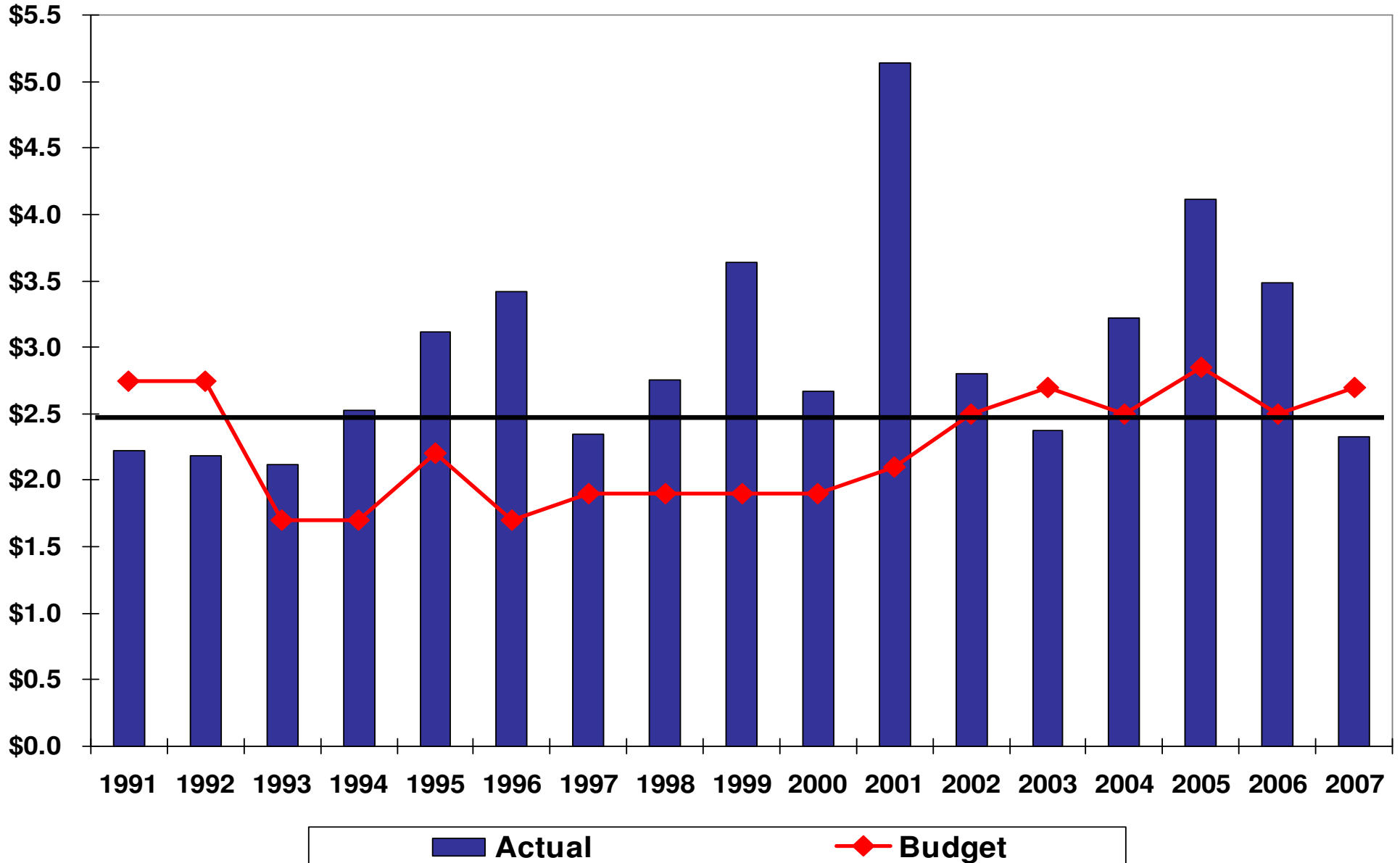
Vision for Mission History 1991 - 2007



* First Year

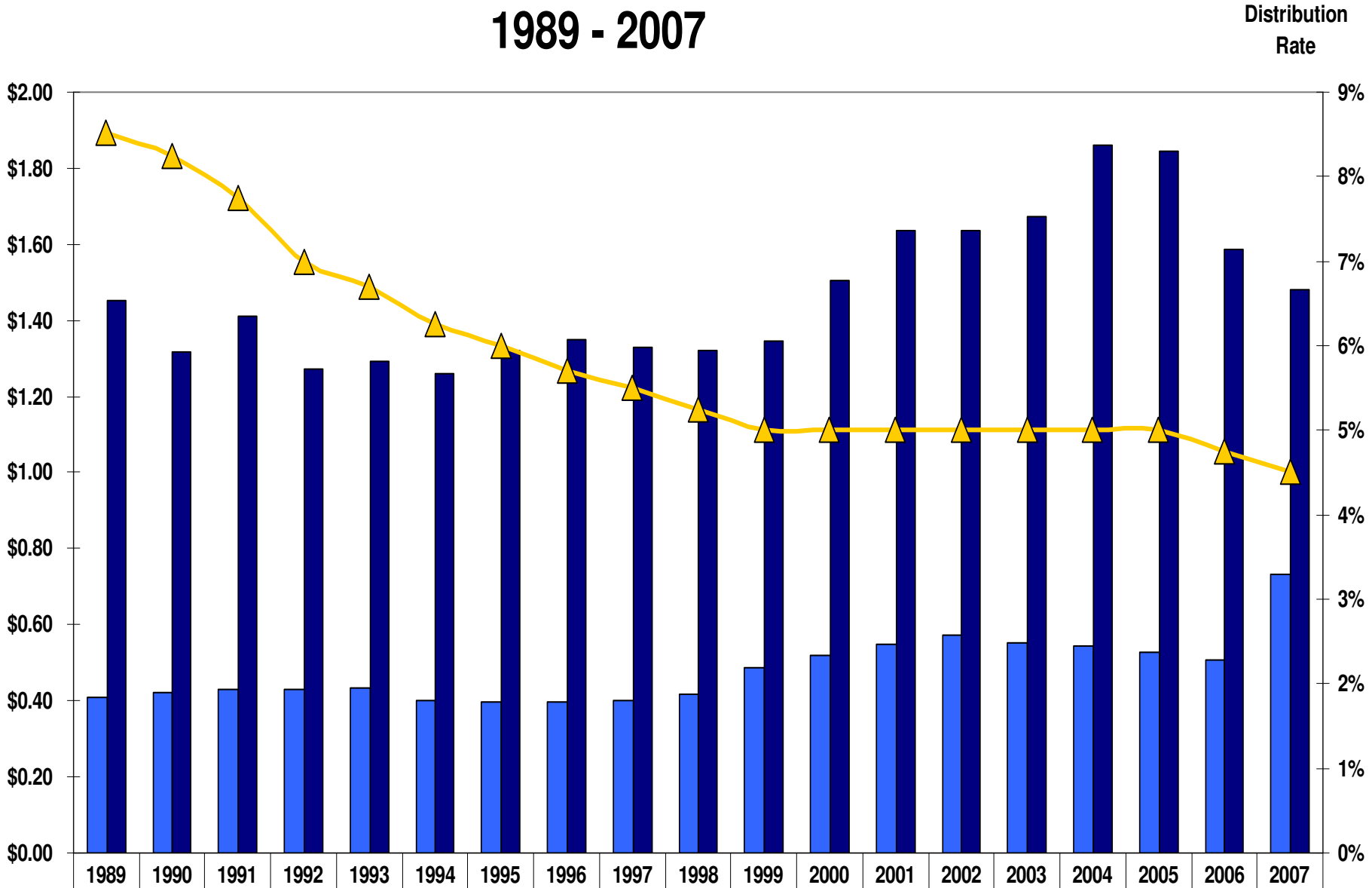
Bequests & Trust Income In Support of Current Fund Operations 1991 - 2007

M I L L I O N S



Current Fund Endowment Distributions and Rates

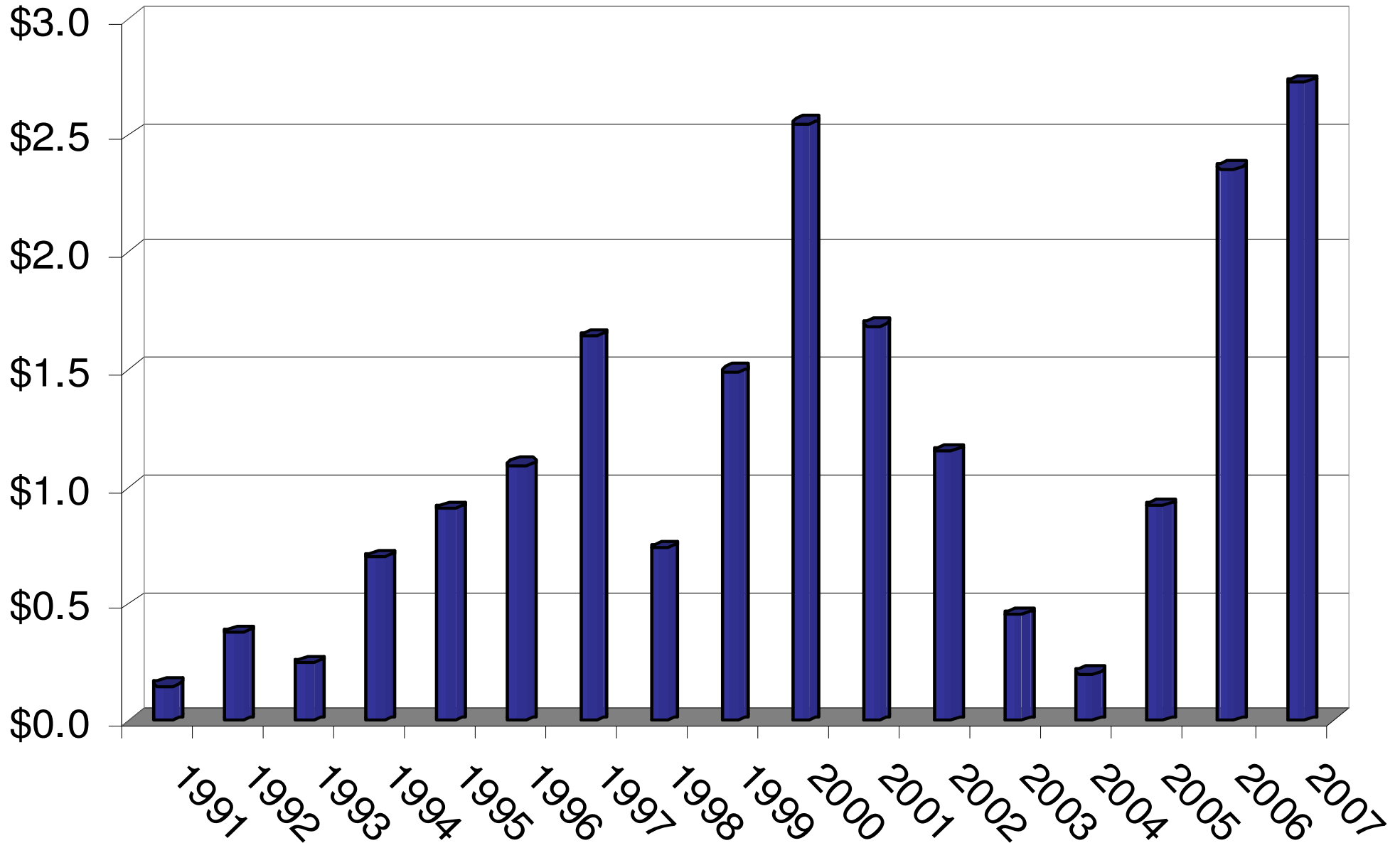
1989 - 2007



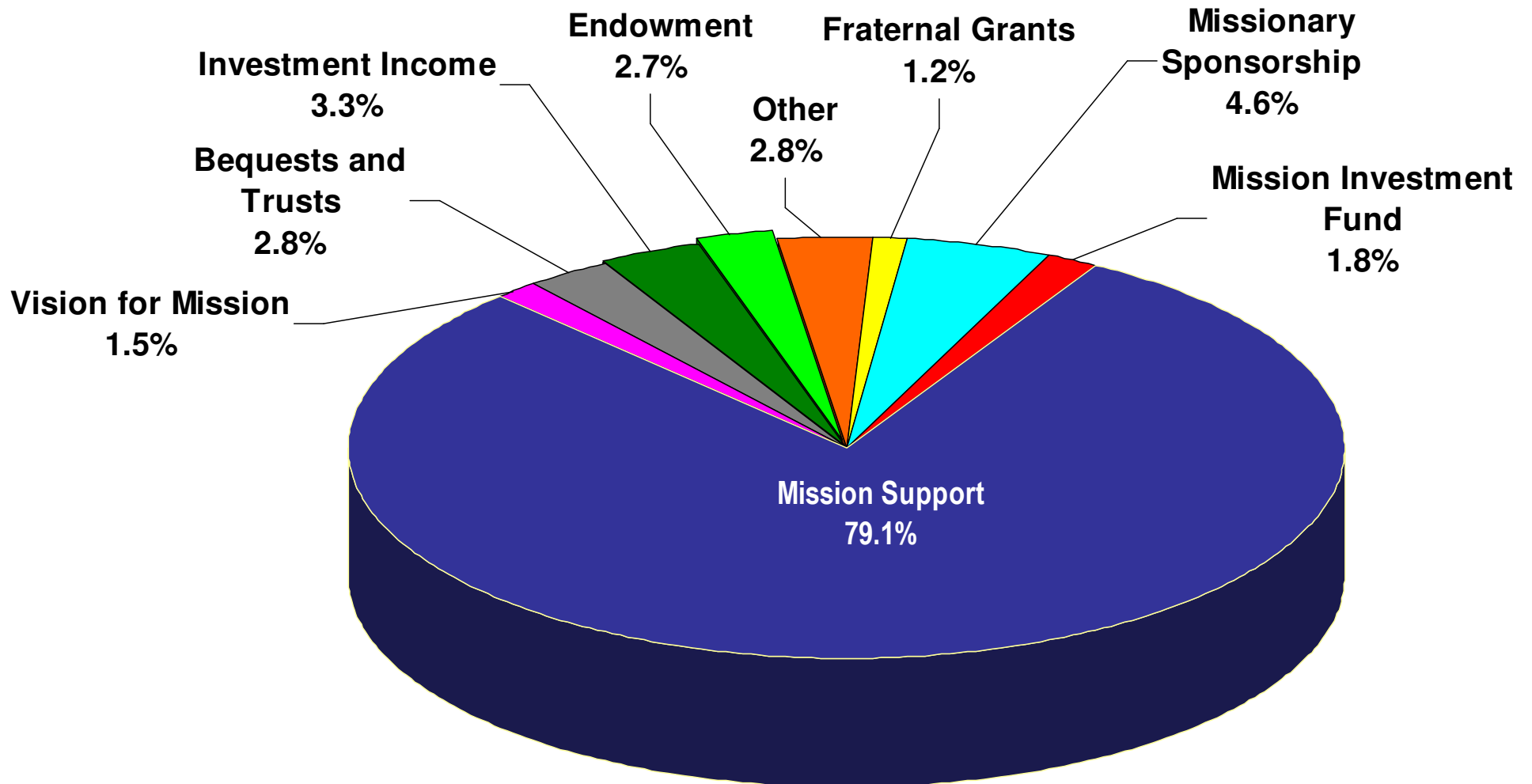
Unrestricted	\$0.41	\$0.42	\$0.43	\$0.43	\$0.43	\$0.40	\$0.40	\$0.40	\$0.40	\$0.42	\$0.49	\$0.52	\$0.55	\$0.57	\$0.55	\$0.55	\$0.53	\$0.51	\$0.73
Temporarily Restricted	\$1.45	\$1.32	\$1.41	\$1.27	\$1.29	\$1.26	\$1.32	\$1.35	\$1.33	\$1.32	\$1.34	\$1.50	\$1.64	\$1.64	\$1.67	\$1.86	\$1.85	\$1.59	\$1.48
Distribution Rate	8.53%	8.25%	7.75%	7.00%	6.70%	6.25%	6.00%	5.70%	5.50%	5.25%	5.00%	5.00%	5.00%	5.00%	5.00%	5.00%	5.00%	4.75%	4.50%

Investment Income History 1991 - 2007

Millions



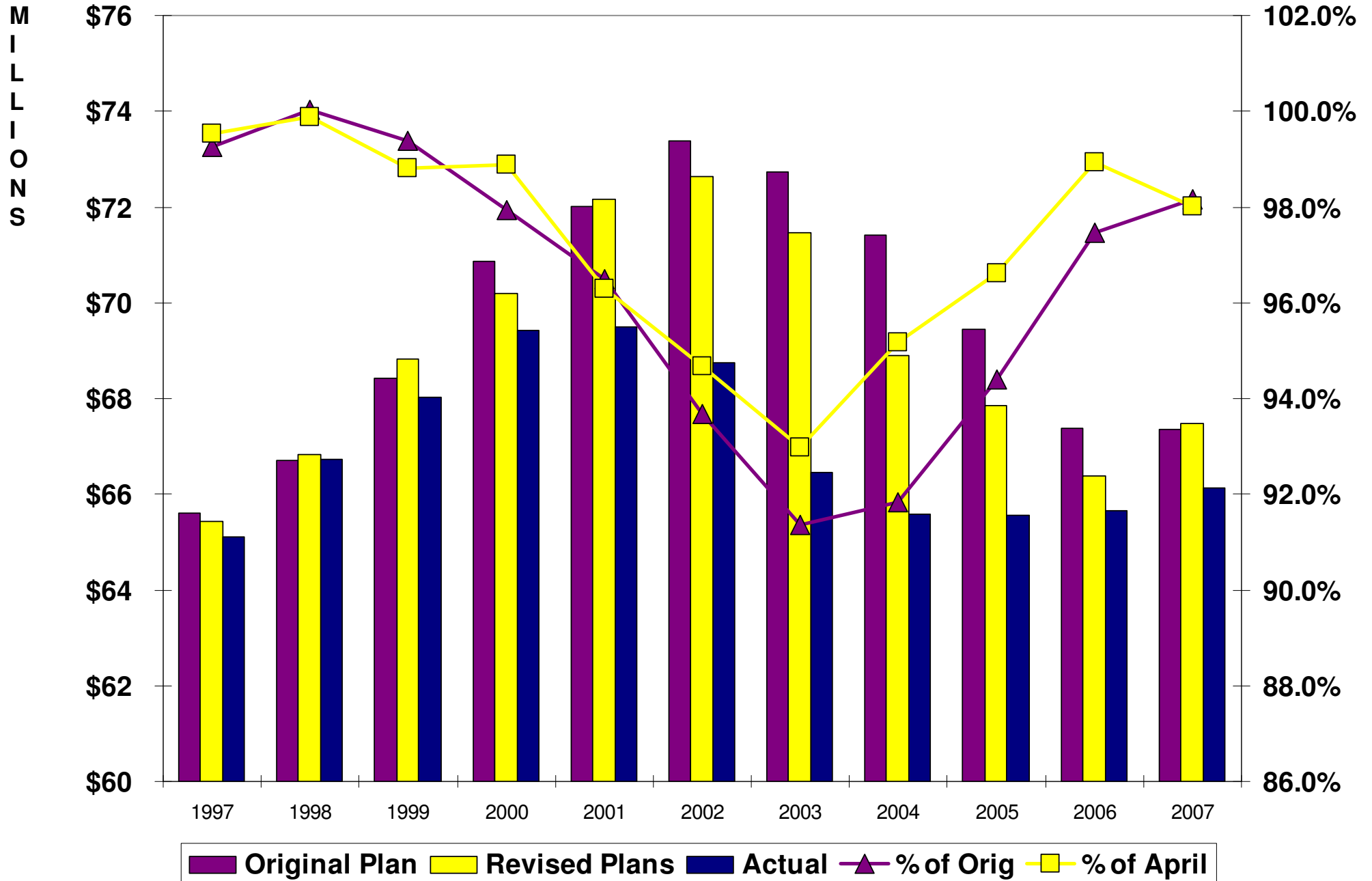
2007 Current Fund Revenue \$83.3 Million



Mission Support Income

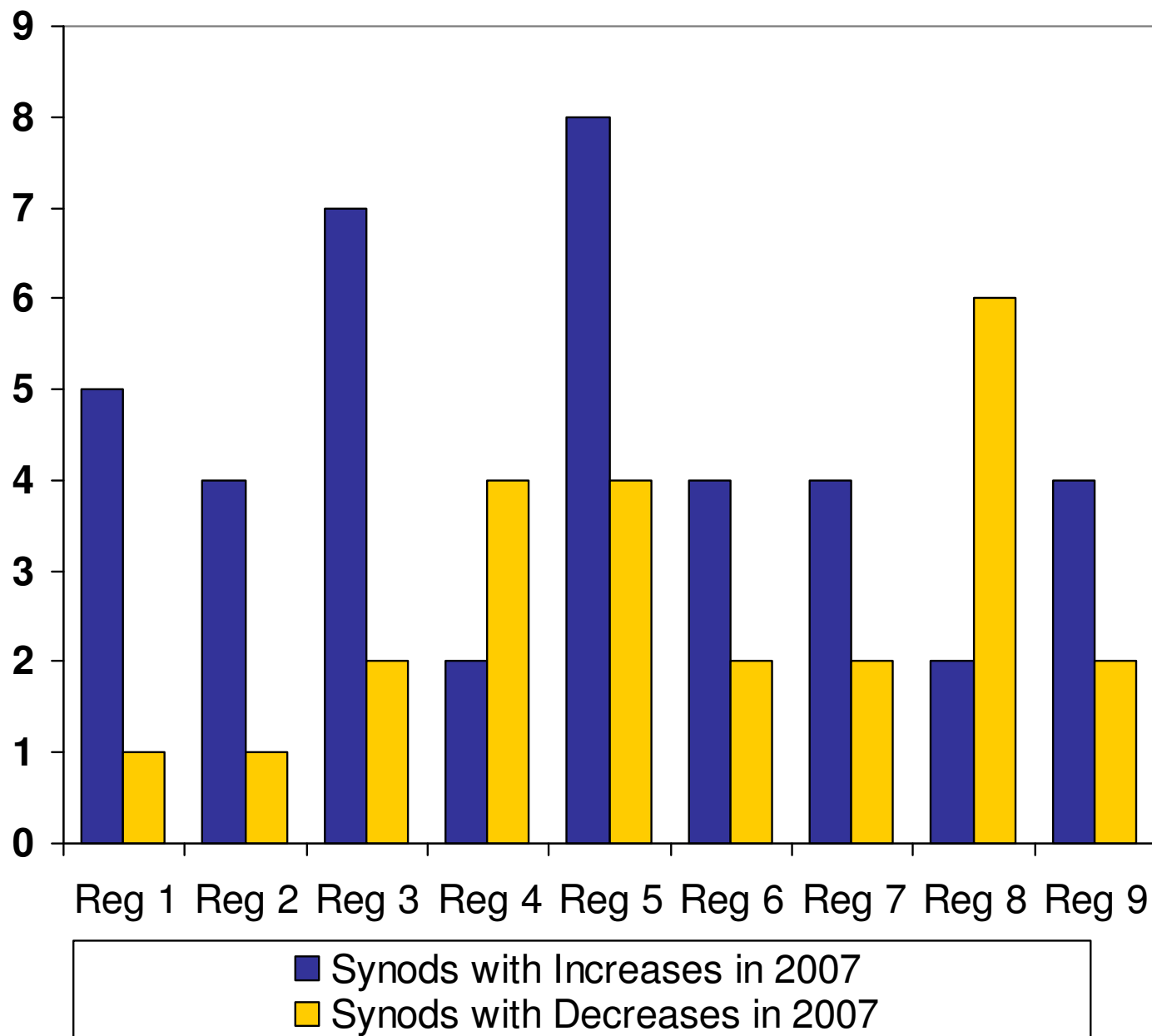
Original and Revised Plans vs. Actual

With Actual as Percentage of Original and Revised Plans

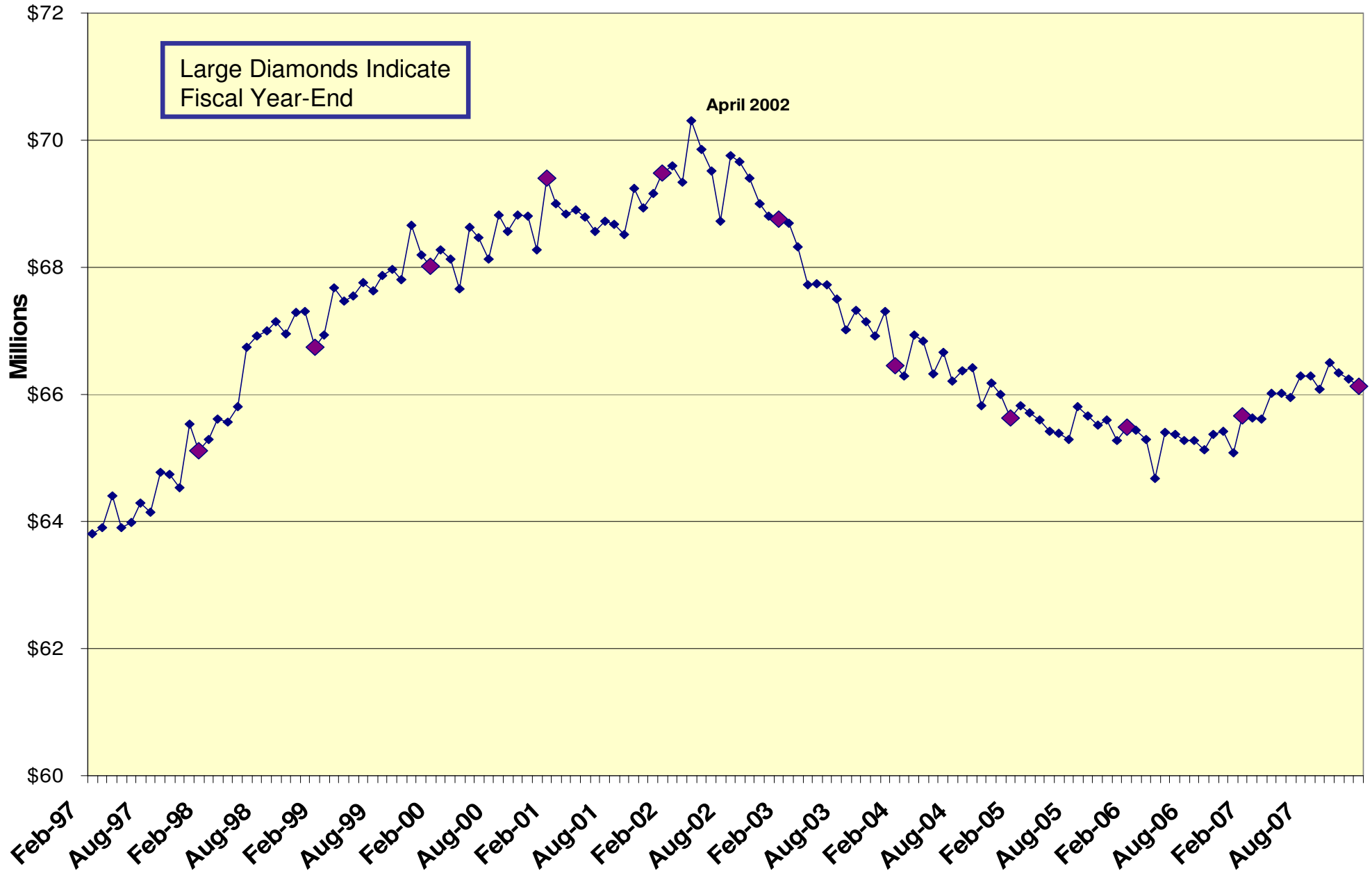


Changes in Mission Support in Synods within Region 2007 and 2006

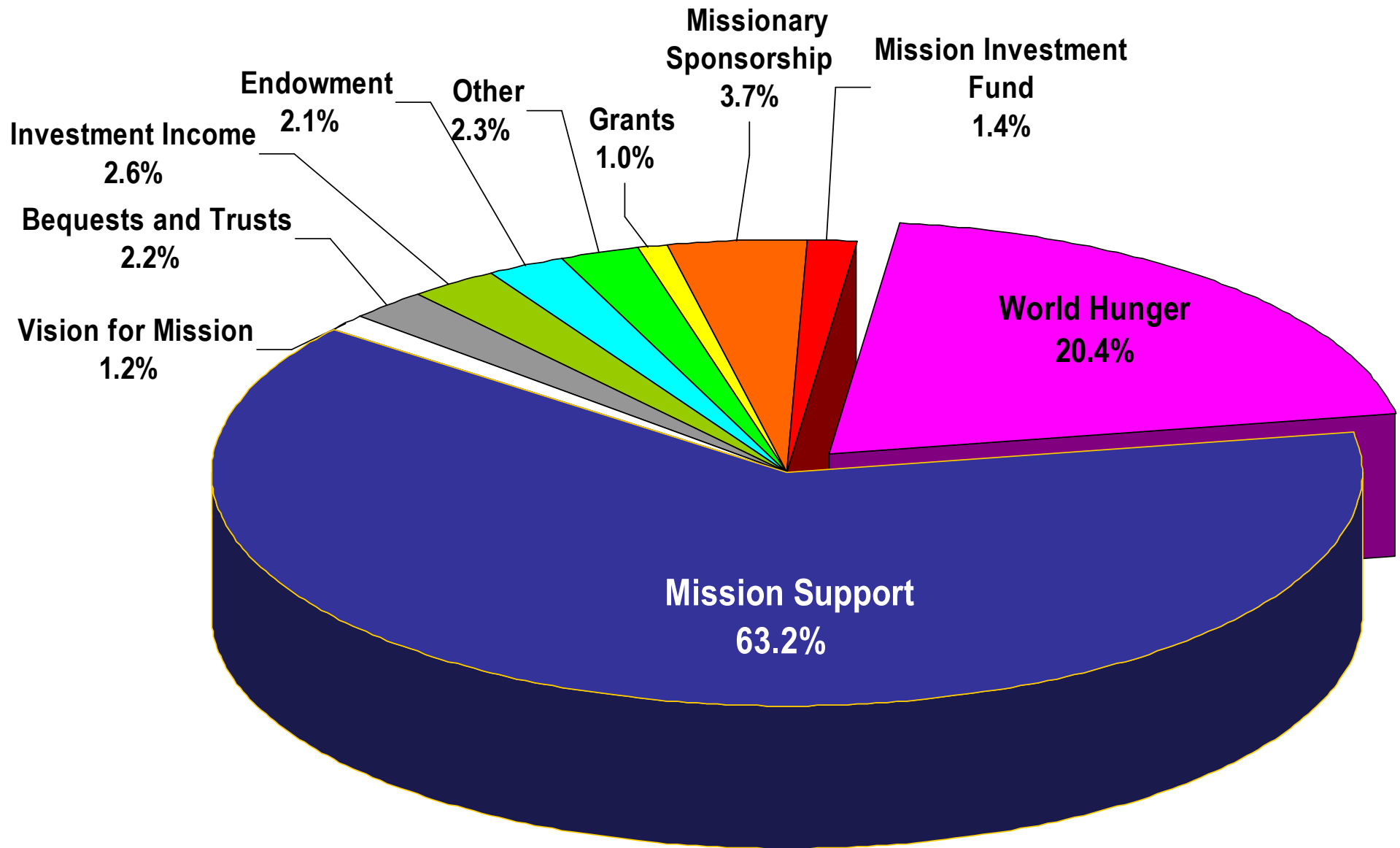
- In 2007, **41** synods showed an **increase**
- In 2006, 37 synods showed an increase
- In 2007, **24** synods showed a **decrease**
- In 2006, 28 synods show a decrease



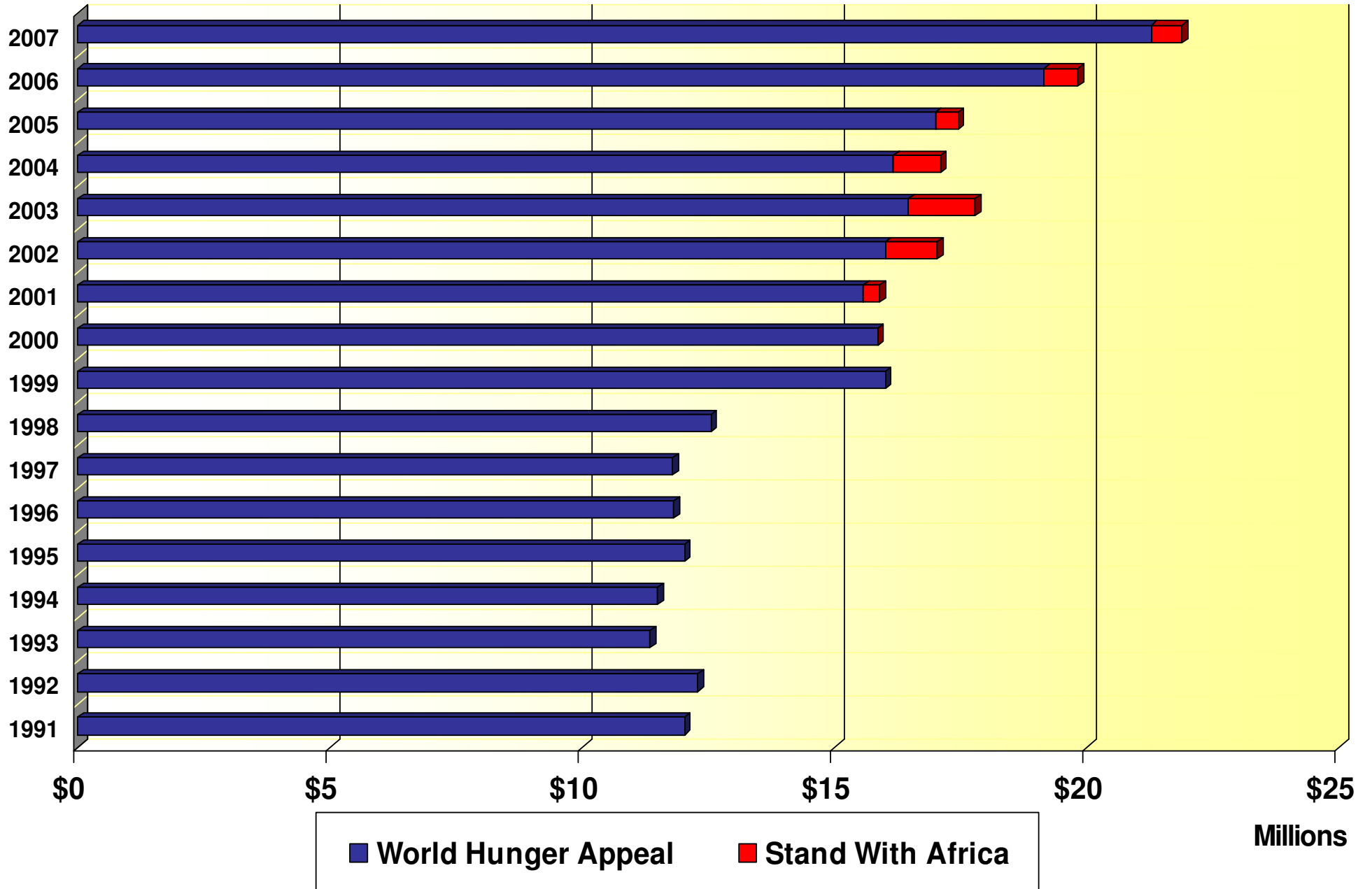
Mission Support Received in Preceding 12 Months 1997 - 2007



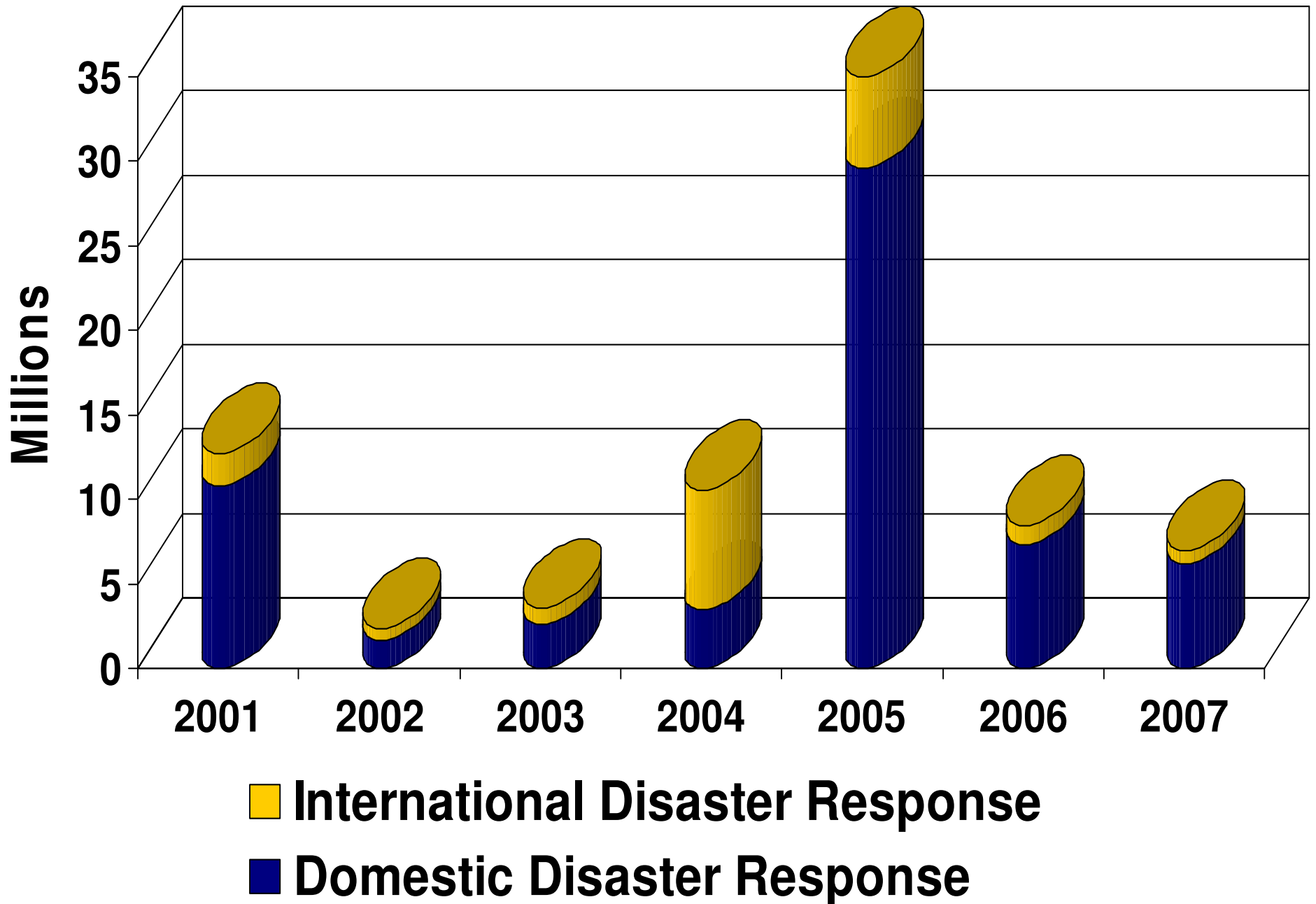
2007 Revenue Including World Hunger \$104.6 Million



World Hunger Income 1991 - 2007



Disaster Appeal 2001 - 2007

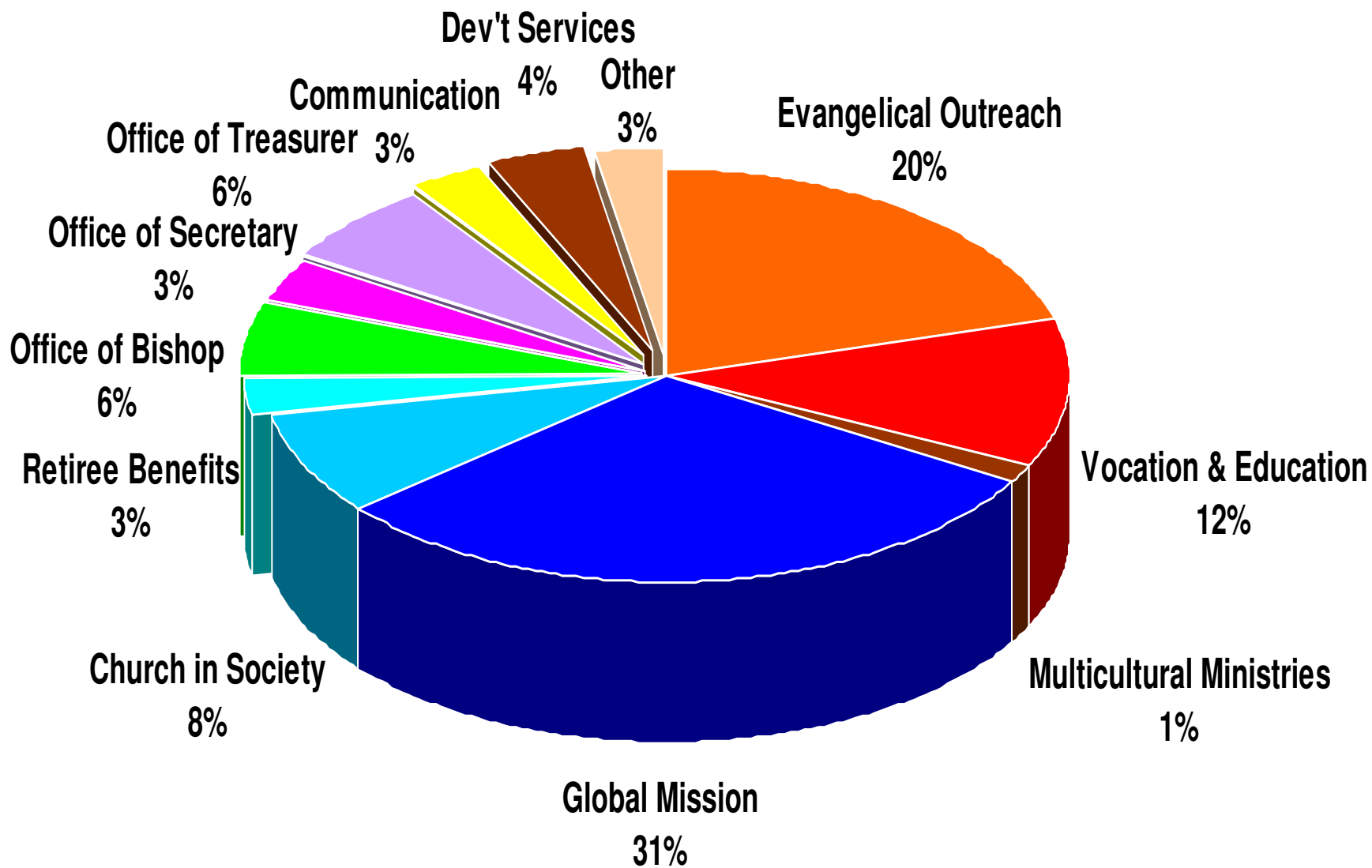


2007 Disaster Response Income

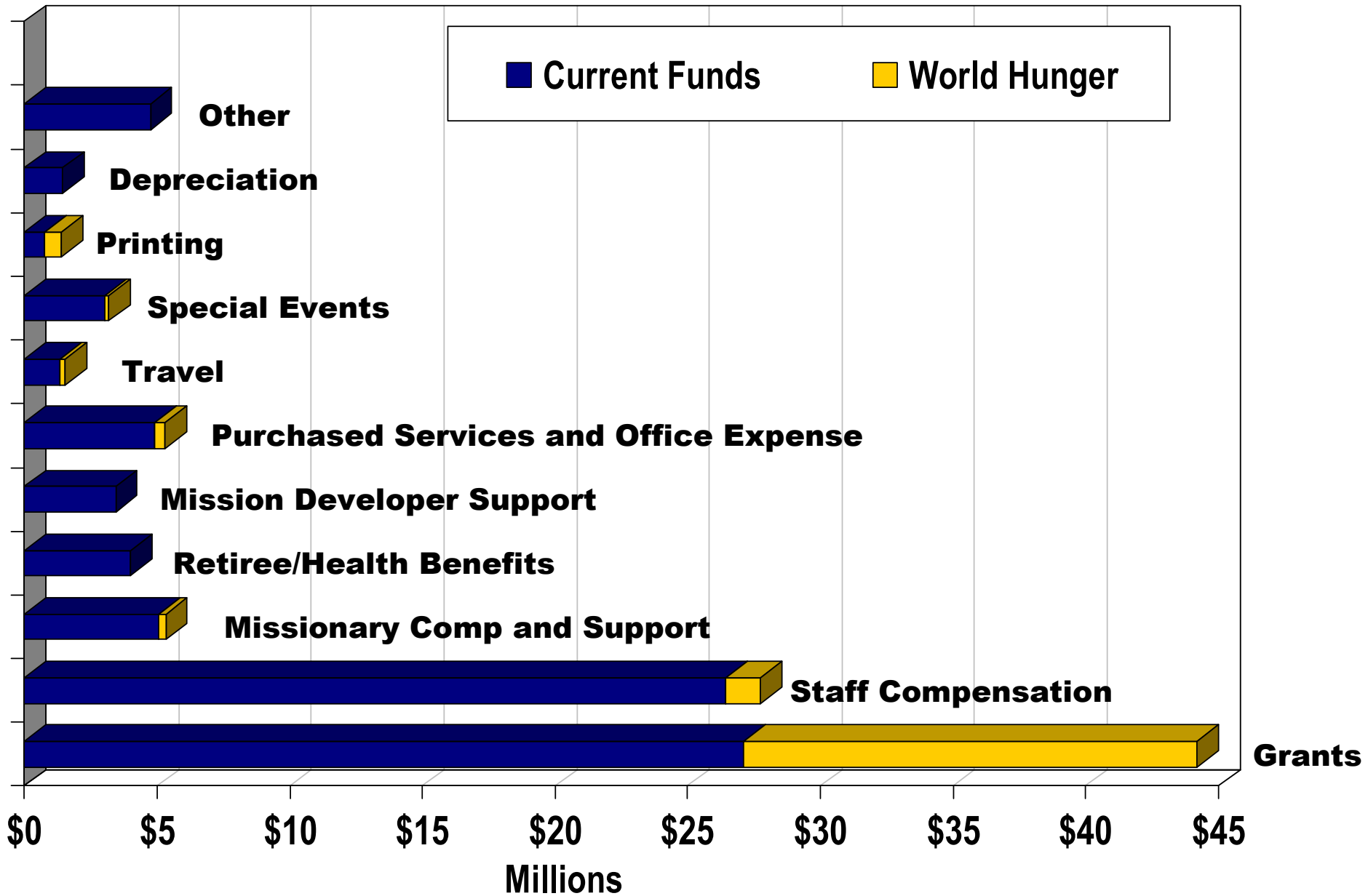
\$6,983,764

• Hurricane Relief	\$ 4,812,864
• Domestic Disaster - Undesignated	845,539
• General Disaster – Undesignated	451,552
• International Disaster - Undesignated	419,281
• 2007 US Floods	95,006
• Sudan Relief	88,237
• US Tornadoes	87,412
• CA Fires	79,227
• South Asia Floods	66,807
• International Disaster - Other	32,665
• Domestic Disasters - Other	5,174

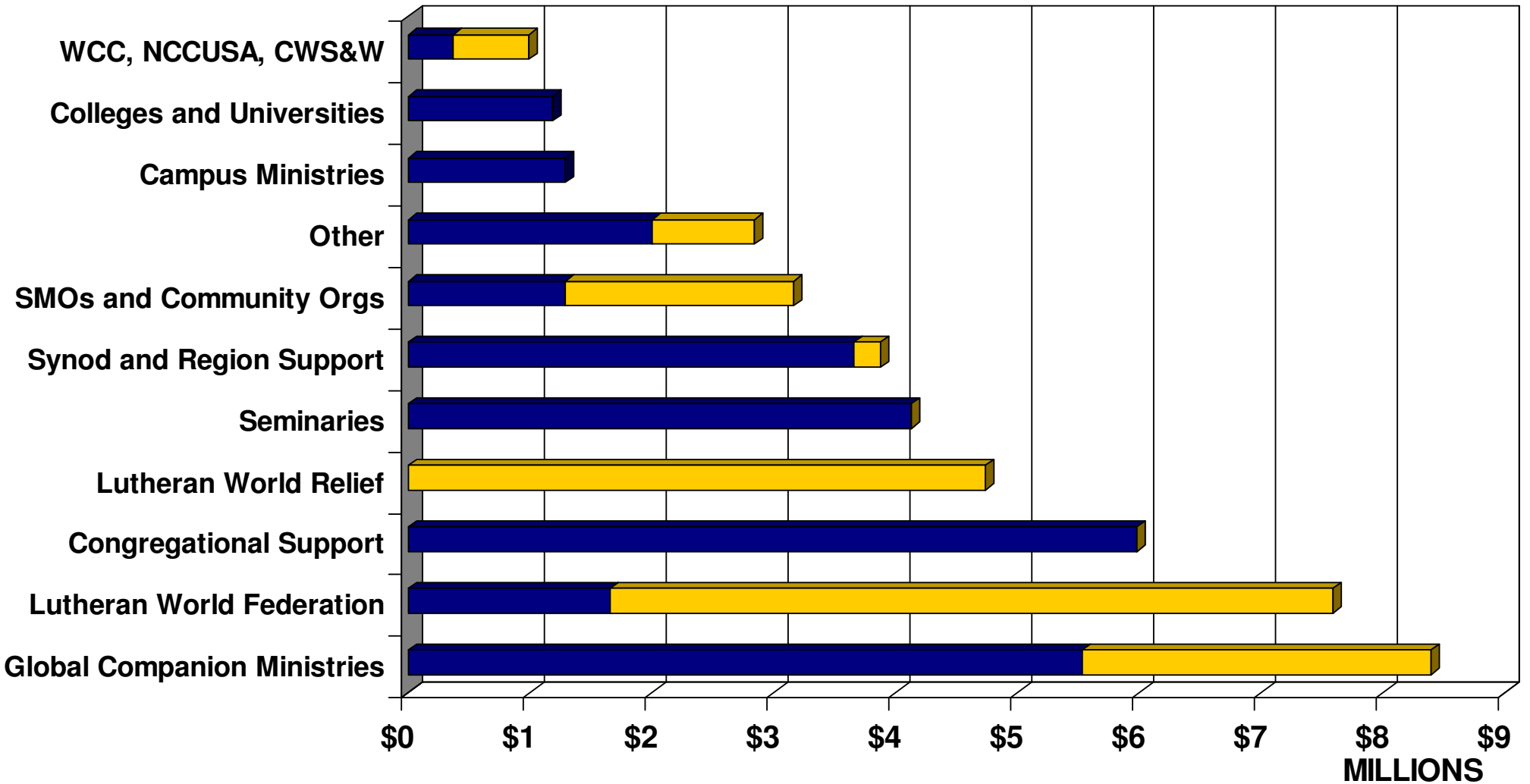
Expenditures by Churchwide Unit Including World Hunger



ELCA 2007 Expenditures by Type

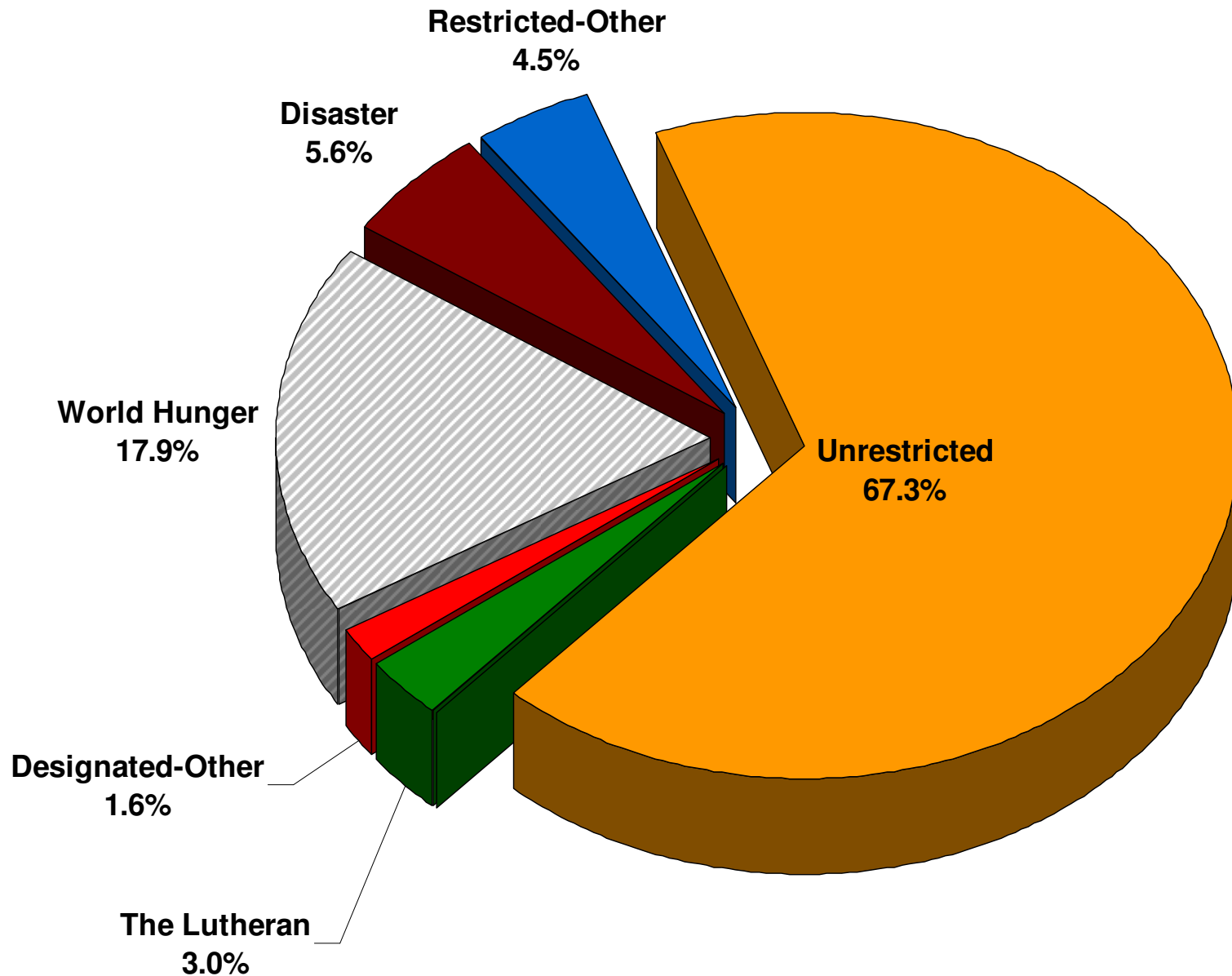


ELCA 2007 Financial Support Grants Including World Hunger

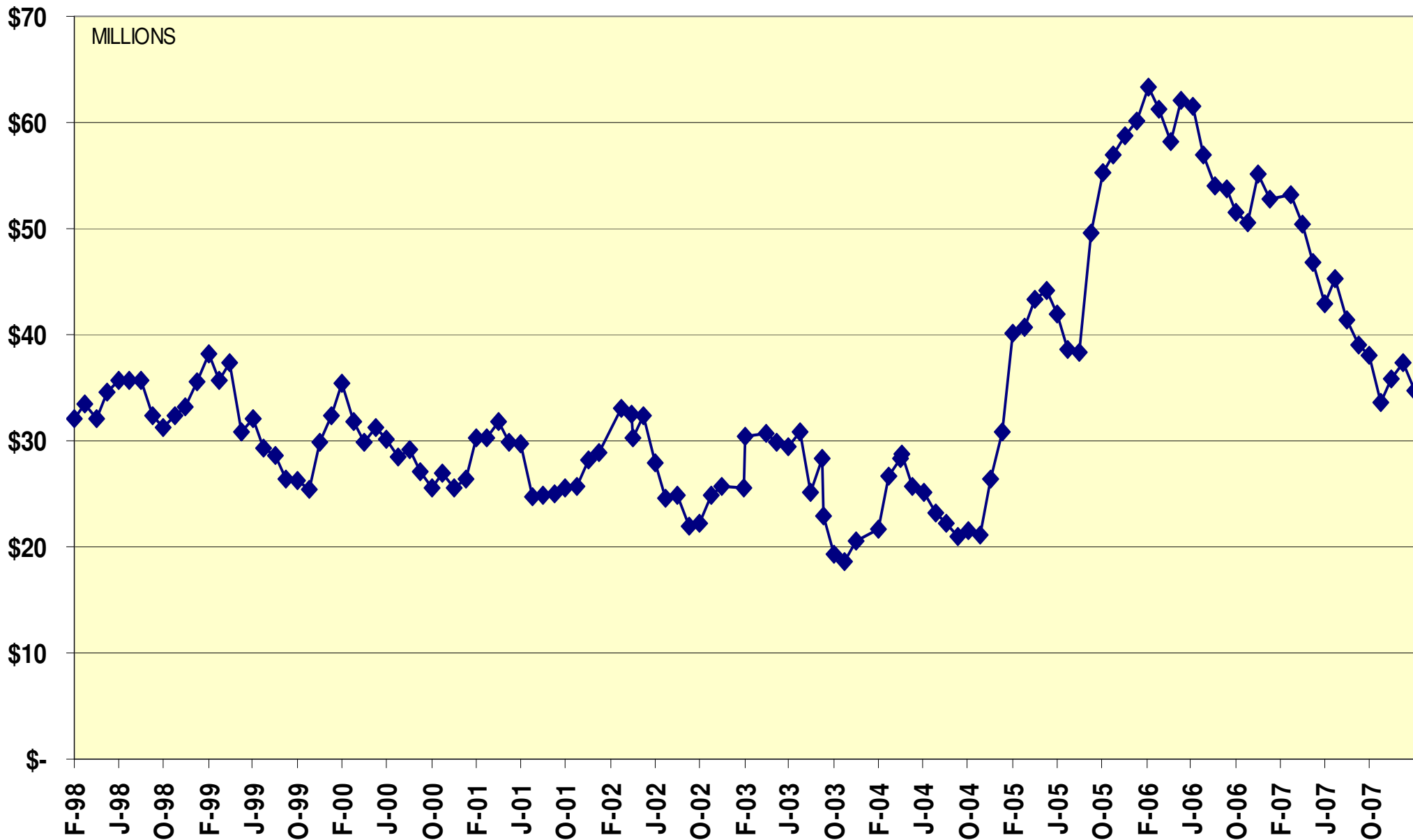


Fiscal 2007 Revenue for All fund Groups

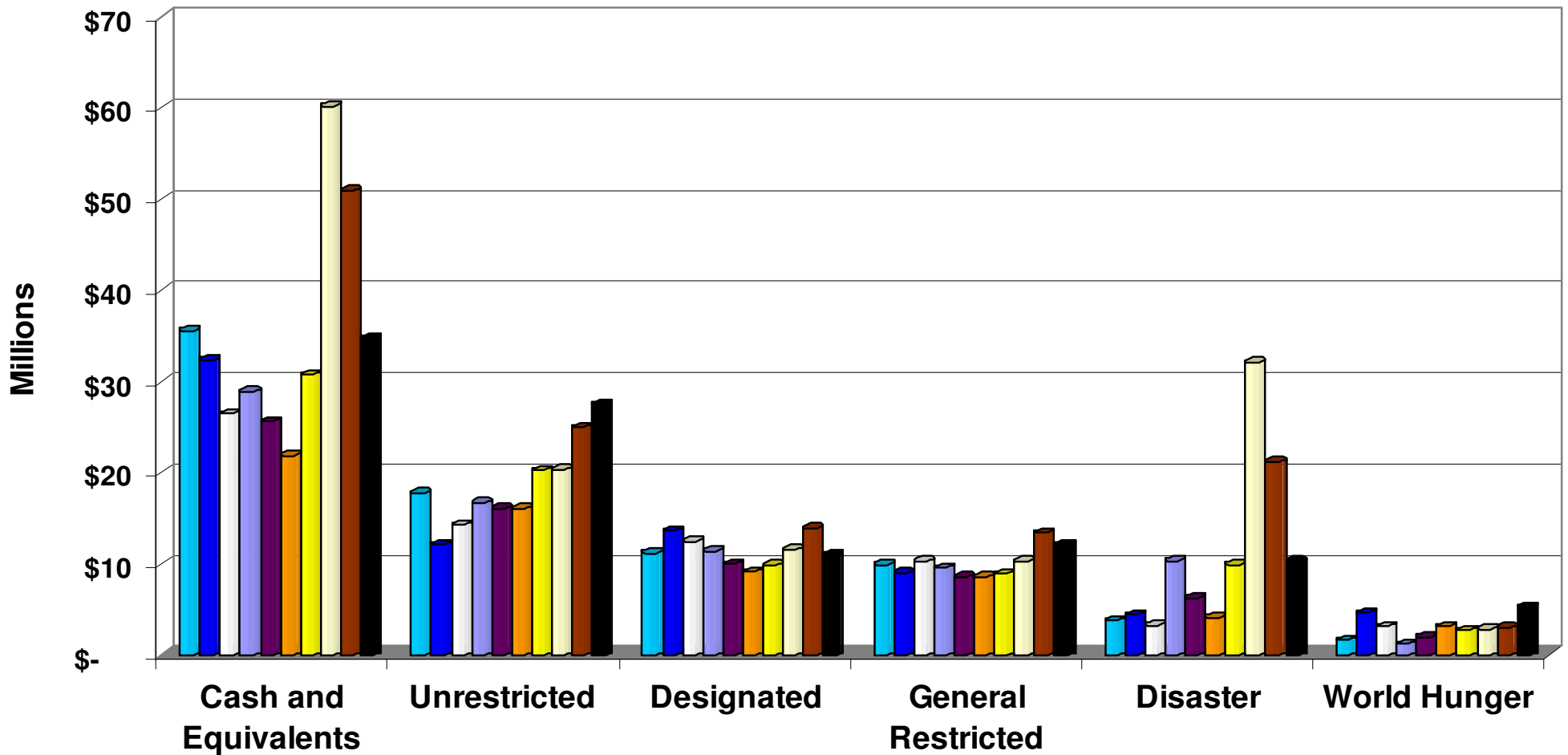
\$124,286,293



Cash and Short Term Investments At Month-end for Fiscal Years 1998 – 2007



Cash & Investments and Restricted, Designated and Unrestricted Fund Balances at Year-end



■ 1998
 ■ 1999
 ■ 2000
 ■ 2001
 ■ 2002
 ■ 2003
 ■ 2004
 ■ 2005
 ■ 2006
 ■ 2007

Fund Balances as of January 31, 2008

\$72 million

