

**Evangelical Lutheran Church in America**  
**SYNOCDICAL REMITTANCES**  
for the period ending  
July 31, 2009

		ORIGINAL PLAN			REVISED ESTIMATE			CURRENT PERIOD		YEAR-TO-DATE			\$ VARIANCE		SPECIFIC MISSION SUPPORT
		AMOUNT	MS%	% REC'D	AMOUNT	MS%	% REC'D	2009	2008	2009	2008	% Vary	Monthly	Y-T-D	
<b>Alaska</b>	<b>1A</b>	\$ 182,839	38.00%	45.0%	\$ 178,600	38.00%	46.1%	14,923	16,775	82,365	79,138	4.1%	(1,852)	3,226	11,126
<b>N.W. Wash</b>	<b>1B</b>	671,000	45.50%	47.3%	682,500	45.50%	46.5%	54,684	55,863	317,443	334,234	(5.0%)	(1,179)	(16,791)	106,021
<b>S.W. Wash</b>	<b>1C</b>	484,500	38.00%	44.7%	484,500	38.00%	44.7%	29,935	36,420	216,564	207,584	4.3%	(6,485)	8,980	68,185
<b>E. Wash / Id</b>	<b>1D</b>	411,450	39.00%	38.7%	397,800	39.00%	40.0%	7,744	53,772	159,212	156,156	2.0%	(46,028)	3,056	31,248
<b>Oregon</b>	<b>1E</b>	551,880	42.00%	42.6%	505,055	41.50%	46.6%	39,848	45,355	235,150	244,039	(3.6%)	(5,507)	(8,889)	81,578
<b>Montana</b>	<b>1F</b>	455,000	39.40%	45.6%	455,000	39.40%	45.6%	34,255	48,597	207,518	218,236	(4.9%)	(14,342)	(10,718)	76,468
<b>Total Region 1</b>		<u>2,756,669</u>	<u>40.81%</u>	<u>44.2%</u>	<u>2,703,455</u>	<u>40.73%</u>	<u>45.1%</u>	<u>181,388</u>	<u>256,782</u>	<u>1,218,252</u>	<u>1,239,387</u>	<u>(1.7%)</u>	<u>(75,394)</u>	<u>(21,135)</u>	<u>374,626</u>
<b>Sierra Pacific</b>	<b>2A</b>	1,300,500	51.00%	39.7%	1,300,500	51.00%	39.7%	99,253	92,895	516,852	544,209	(5.0%)	6,358	(27,356)	89,742
<b>SW California</b>	<b>2B</b>	765,000	51.00%	40.9%	686,000	49.00%	45.6%	50,801	53,987	313,045	345,614	(9.4%)	(3,186)	(32,569)	107,885
<b>Pacifica</b>	<b>2C</b>	1,199,377	55.00%	43.1%	1,155,763	53.00%	44.7%	90,305	89,840	516,681	570,690	(9.5%)	465	(54,009)	120,520
<b>Grand Canyon</b>	<b>2D</b>	1,504,500	51.00%	40.1%	1,351,500	51.00%	44.6%	80,789	84,459	602,718	652,345	(7.6%)	(3,670)	(49,628)	101,361
<b>Rocky Mtn.</b>	<b>2E</b>	1,750,000	50.00%	38.9%	1,500,000	50.00%	45.4%	107,228	115,070	681,037	741,936	(8.2%)	(7,841)	(60,898)	169,871
<b>Total Region 2</b>		<u>6,519,377</u>	<u>51.41%</u>	<u>40.3%</u>	<u>5,993,763</u>	<u>50.88%</u>	<u>43.9%</u>	<u>428,377</u>	<u>436,251</u>	<u>2,630,334</u>	<u>2,854,794</u>	<u>(7.9%)</u>	<u>(7,874)</u>	<u>(224,460)</u>	<u>589,380</u>
<b>W. No. Dak</b>	<b>3A</b>	395,000	41.49%	44.0%	385,140	42.00%	45.2%	25,964	28,102	173,949	166,855	4.3%	(2,138)	7,094	46,703
<b>E. No. Dak</b>	<b>3B</b>	561,700	41.00%	35.9%	480,000	40.00%	42.1%	33,119	28,583	201,870	181,632	11.1%	4,536	20,238	32,257
<b>South Dak</b>	<b>3C</b>	939,120	42.00%	47.5%	914,546	42.00%	48.8%	66,403	64,415	445,967	443,928	0.5%	1,989	2,039	119,516
<b>N.W. Minn</b>	<b>3D</b>	956,250	51.00%	36.9%	867,000	51.00%	40.7%	58,617	62,316	352,732	347,551	1.5%	(3,700)	5,181	42,448
<b>N.E. Minn</b>	<b>3E</b>	710,500	49.00%	41.5%	681,000	49.00%	43.3%	47,068	42,449	294,724	309,569	(4.8%)	4,619	(14,845)	99,484
<b>S.W. Minn</b>	<b>3F</b>	1,293,555	52.50%	44.9%	1,293,555	52.50%	44.9%	112,490	116,125	580,634	608,005	(4.5%)	(3,636)	(27,370)	189,730
<b>Mpls Area</b>	<b>3G</b>	2,090,000	55.00%	39.6%	2,090,000	55.00%	39.6%	173,040	141,346	827,780	866,373	(4.5%)	31,694	(38,593)	264,611
<b>St. Paul Area</b>	<b>3H</b>	1,179,000	50.00%	41.4%	1,128,000	50.00%	43.3%	65,251	83,750	488,184	536,737	(9.0%)	(18,499)	(48,554)	83,281
<b>S.E. Minn</b>	<b>3I</b>	1,206,450	52.50%	40.1%	1,144,500	52.50%	42.3%	71,688	87,779	484,371	499,454	(3.0%)	(16,091)	(15,083)	174,815
<b>Total Region 3</b>		<u>9,331,575</u>	<u>49.63%</u>	<u>41.3%</u>	<u>8,983,741</u>	<u>49.68%</u>	<u>42.9%</u>	<u>653,641</u>	<u>654,866</u>	<u>3,850,211</u>	<u>3,960,103</u>	<u>(2.8%)</u>	<u>(1,225)</u>	<u>(109,892)</u>	<u>1,052,844</u>

**Evangelical Lutheran Church in America**  
**SYNODICAL REMITTANCES**  
for the period ending  
July 31, 2009

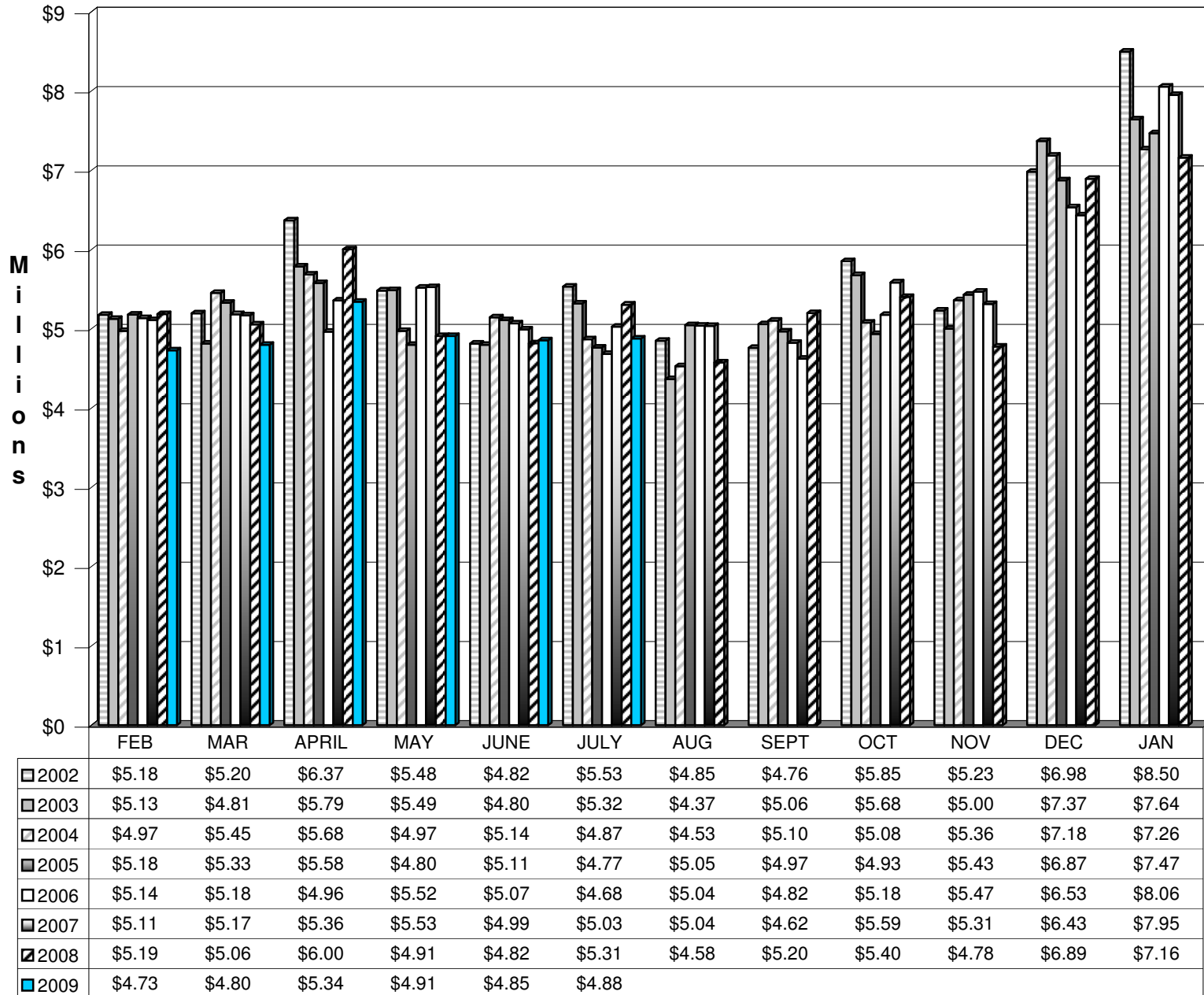
		ORIGINAL PLAN			REVISED ESTIMATE			CURRENT PERIOD		YEAR-TO-DATE			\$ VARIANCE		SPECIFIC MISSION SUPPORT
		AMOUNT	MS%	% REC'D	AMOUNT	MS%	% REC'D	2009	2008	2009	2008	% Vary	Monthly	Y-T-D	
<b>Nebraska</b>	<b>4A</b>	2,365,500	57.00%	49.6%	2,365,500	57.00%	49.6%	180,534	200,951	1,172,962	1,223,893	(4.2%)	(20,417)	(50,931)	109,703
<b>Central States</b>	<b>4B</b>	1,166,000	53.00%	47.8%	1,174,654	53.00%	47.5%	87,180	94,755	557,720	579,410	(3.7%)	(7,575)	(21,690)	76,574
<b>Ark/OK</b>	<b>4C</b>	293,983	42.70%	40.7%	284,504	42.80%	42.0%	16,955	22,567	119,526	143,903	(16.9%)	(5,611)	(24,377)	19,807
<b>N Tx / N La</b>	<b>4D</b>	669,619	46.00%	47.7%	655,354	46.50%	48.7%	51,514	56,055	319,336	300,624	6.2%	(4,541)	18,712	51,027
<b>S.W. Tex</b>	<b>4E</b>	1,080,750	55.00%	48.6%	1,188,825	55.00%	44.2%	58,829	70,726	525,153	531,387	(1.2%)	(11,897)	(6,234)	74,235
<b>Tx.-La. Gulf Coa:</b>	<b>4F</b>	800,000	50.00%	46.4%	800,000	50.16%	46.4%	55,775	70,696	371,181	390,821	(5.0%)	(14,921)	(19,640)	64,680
<b>Total Region 4</b>		<b>6,375,852</b>	<b>52.87%</b>	<b>48.1%</b>	<b>6,468,837</b>	<b>53.04%</b>	<b>47.4%</b>	<b>450,788</b>	<b>515,750</b>	<b>3,065,878</b>	<b>3,170,038</b>	<b>(3.3%)</b>	<b>(64,962)</b>	<b>(104,160)</b>	<b>396,026</b>
<b>Metro Chicago</b>	<b>5A</b>	2,110,366	55.10%	43.3%	1,975,993	55.00%	46.2%	137,505	133,130	913,823	908,311	0.6%	4,375	5,512	142,182
<b>No. Illinois</b>	<b>5B</b>	1,614,250	55.00%	45.3%	1,508,518	55.00%	48.4%	115,456	124,404	730,733	772,072	(5.4%)	(8,948)	(41,339)	115,719
<b>Cen. So. Ill</b>	<b>5C</b>	1,078,000	56.00%	47.9%	1,078,000	56.00%	47.9%	91,274	104,162	516,248	542,713	(4.9%)	(12,888)	(26,465)	104,704
<b>S.E. Iowa</b>	<b>5D</b>	1,776,085	53.50%	44.0%	1,543,700	53.50%	50.7%	133,193	124,108	782,174	809,686	(3.4%)	9,085	(27,512)	98,799
<b>West Iowa</b>	<b>5E</b>	613,800	49.50%	41.5%	624,690	49.50%	40.8%	42,500	42,500	255,000	255,000	0.0%	-	-	76,330
<b>N.E. Iowa</b>	<b>5F</b>	798,000	42.00%	36.4%	798,000	42.00%	36.4%	49,139	51,215	290,590	299,582	(3.0%)	(2,077)	(8,992)	130,393
<b>N. Great Lakes</b>	<b>5G</b>	564,425	53.50%	42.0%	535,535	53.50%	44.3%	28,650	46,663	237,126	245,862	(3.6%)	(18,013)	(8,736)	62,155
<b>NW of Wisc</b>	<b>5H</b>	1,029,022	58.00%	34.9%	812,900	55.00%	44.1%	63,786	75,932	358,667	390,571	(8.2%)	(12,146)	(31,904)	90,389
<b>E.C. Wisc</b>	<b>5I</b>	1,072,500	55.00%	42.0%	1,017,500	55.00%	44.3%	72,848	86,732	450,274	477,241	(5.7%)	(13,884)	(26,967)	284,758
<b>Grtr Milwaukee</b>	<b>5J</b>	1,600,000	61.00%	43.2%	1,442,400	60.10%	48.0%	127,386	129,185	691,822	710,470	(2.6%)	(1,799)	(18,647)	109,905
<b>SC of Wisc</b>	<b>5K</b>	1,072,000	57.90%	42.3%	1,072,000	57.90%	42.3%	80,704	93,644	453,687	474,452	(4.4%)	(12,941)	(20,764)	101,328
<b>LaCrosse (W)</b>	<b>5L</b>	480,000	55.00%	46.2%	475,000	55.00%	46.7%	38,344	35,836	221,817	219,765	0.9%	2,508	2,052	57,397
<b>Total Region 5</b>		<b>13,808,448</b>	<b>54.63%</b>	<b>42.7%</b>	<b>12,884,236</b>	<b>54.24%</b>	<b>45.8%</b>	<b>980,785</b>	<b>1,047,513</b>	<b>5,901,960</b>	<b>6,105,724</b>	<b>(3.3%)</b>	<b>(66,728)</b>	<b>(203,764)</b>	<b>1,374,059</b>
<b>SE Mich</b>	<b>6A</b>	980,500	53.00%	33.4%	980,500	53.00%	33.4%	47,144	70,918	327,496	431,634	(24.1%)	(23,774)	(104,138)	28,266
<b>NW Lower Mich</b>	<b>6B</b>	994,500	51.00%	44.5%	984,300	51.00%	44.9%	78,957	92,287	442,121	483,828	(8.6%)	(13,330)	(41,707)	73,815 *
<b>Ind / Ky</b>	<b>6C</b>	1,400,000	51.00%	42.5%	1,390,500	51.50%	42.8%	116,768	108,156	594,669	627,986	(5.3%)	8,613	(33,317)	130,211 *
<b>N.W. Ohio</b>	<b>6D</b>	1,342,524	51.00%	40.0%	1,276,275	51.00%	42.1%	92,782	116,601	537,113	582,954	(7.9%)	(23,820)	(45,841)	133,501
<b>N.E. Ohio</b>	<b>6E</b>	1,160,000	50.00%	44.5%	1,029,000	49.00%	50.2%	91,411	108,734	516,716	516,393	0.1%	(17,323)	322	23,467
<b>S. Ohio</b>	<b>6F</b>	1,288,000	50.00%	43.0%	1,288,000	50.00%	43.0%	90,517	95,833	553,454	569,165	(2.8%)	(5,316)	(15,711)	89,538
<b>Total Region 6</b>		<b>7,165,524</b>	<b>50.92%</b>	<b>41.5%</b>	<b>6,948,575</b>	<b>50.87%</b>	<b>42.8%</b>	<b>517,579</b>	<b>592,529</b>	<b>2,971,568</b>	<b>3,211,960</b>	<b>(7.5%)</b>	<b>(74,950)</b>	<b>(240,392)</b>	<b>478,798</b>

**Evangelical Lutheran Church in America**  
**SYNOCDICAL REMITTANCES**  
for the period ending  
July 31, 2009

		ORIGINAL PLAN			REVISED ESTIMATE			CURRENT PERIOD		YEAR-TO-DATE			\$ VARIANCE		SPECIFIC MISSION SUPPORT
		AMOUNT	MS%	% REC'D	AMOUNT	MS%	% REC'D	2009	2008	2009	2008	% Vary	Monthly	Y-T-D	
<b>New Jersey</b>	<b>7A</b>	1,350,000	50.00%	39.3%	1,200,000	50.00%	44.2%	115,811	89,130	529,963	544,767	(2.7%)	26,682	(14,804)	110,567
<b>New England</b>	<b>7B</b>	1,330,906	55.00%	42.6%	1,209,509	55.00%	46.9%	88,049	109,547	566,798	601,087	(5.7%)	(21,498)	(34,289)	42,124
<b>Metro NY</b>	<b>7C</b>	665,000	47.50%	38.5%	665,000	47.50%	38.5%	37,234	52,085	256,003	279,318	(8.3%)	(14,851)	(23,315)	26,403
<b>Upstate NY</b>	<b>7D</b>	868,800	48.00%	37.1%	774,550	47.00%	41.6%	61,987	59,924	321,985	362,534	(11.2%)	2,063	(40,549)	44,683
<b>N.E. Penn</b>	<b>7E</b>	1,600,600	53.00%	42.2%	1,428,000	51.00%	47.3%	125,340	132,656	675,427	737,926	(8.5%)	(7,315)	(62,499)	204,219
<b>S.E. Penn</b>	<b>7F</b>	1,524,800	53.50%	42.2%	1,444,550	53.50%	44.6%	91,528	123,543	644,133	695,899	(7.4%)	(32,015)	(51,766)	110,052
<b>Slovak Zion</b>	<b>7G</b>	36,000	30.00%	41.7%	36,000	30.51%	41.7%	3,000	2,500	15,000	15,000	0.0%	500	-	5,500
<b>Total Region 7</b>		<b>7,376,106</b>	<b>51.51%</b>	<b>40.8%</b>	<b>6,757,609</b>	<b>50.94%</b>	<b>44.5%</b>	<b>522,949</b>	<b>569,384</b>	<b>3,009,309</b>	<b>3,236,530</b>	<b>(7.0%)</b>	<b>(46,435)</b>	<b>(227,221)</b>	<b>543,548</b>
<b>N.W. Penn</b>	<b>8A</b>	465,000	49.50%	45.4%	465,000	49.50%	45.4%	36,120	39,833	211,066	229,722	(8.1%)	(3,713)	(18,656)	54,518
<b>S.W. Penn</b>	<b>8B</b>	1,300,000	55.00%	46.6%	1,300,000	55.00%	46.6%	81,124	96,130	606,238	627,115	(3.3%)	(15,006)	(20,877)	123,933
<b>Allegheny</b>	<b>8C</b>	515,000	50.00%	47.1%	499,337	48.52%	48.6%	46,193	40,599	242,484	239,147	1.4%	5,594	3,337	24,305
<b>Lower Susq</b>	<b>8D</b>	2,000,000	50.00%	42.6%	2,000,000	50.00%	42.6%	149,773	143,137	852,438	972,032	(12.3%)	6,637	(119,593)	291,327
<b>Upper Susq</b>	<b>8E</b>	621,000	50.00%	43.9%	625,000	50.00%	43.6%	48,442	54,975	272,540	276,637	(1.5%)	(6,534)	(4,097)	68,264
<b>Del / Md</b>	<b>8F</b>	1,472,057	53.00%	40.1%	1,472,057	53.00%	40.1%	95,387	128,607	589,698	692,406	(14.8%)	(33,220)	(102,707)	80,089
<b>Metro DC</b>	<b>8G</b>	1,071,125	55.00%	44.0%	1,071,125	55.00%	44.0%	105,998	84,528	471,529	474,533	(0.6%)	21,471	(3,003)	46,991
<b>W Virg-W Mlyd</b>	<b>8H</b>	350,875	51.50%	48.9%	342,872	51.50%	50.0%	28,572	28,347	171,432	170,082	0.8%	225	1,350	14,459
<b>Total Region 8</b>		<b>7,795,057</b>	<b>52.03%</b>	<b>43.8%</b>	<b>7,775,391</b>	<b>51.93%</b>	<b>44.0%</b>	<b>591,609</b>	<b>616,156</b>	<b>3,417,427</b>	<b>3,681,674</b>	<b>(7.2%)</b>	<b>(24,547)</b>	<b>(264,247)</b>	<b>703,886</b>
<b>Virginia</b>	<b>9A</b>	1,193,202	50.60%	44.9%	1,118,449	50.60%	47.9%	87,925	77,570	535,339	563,214	(4.9%)	10,355	(27,875)	99,508
<b>N. Carolina</b>	<b>9B</b>	2,000,000	39.89%	44.9%	2,000,000	40.50%	44.9%	150,000	175,000	898,241	1,050,000	(14.5%)	(25,000)	(151,759)	112,332
<b>S. Carolina</b>	<b>9C</b>	1,575,000	45.00%	40.0%	1,417,662	45.00%	44.5%	105,054	130,979	630,324	785,874	(19.8%)	(25,925)	(155,550)	99,180
<b>Southeastern</b>	<b>9D</b>	1,544,600	50.00%	43.5%	1,544,600	50.00%	43.5%	93,057	114,416	671,928	682,155	(1.5%)	(21,358)	(10,228)	42,543
<b>Florida-Bahamas</b>	<b>9E</b>	1,553,609	51.00%	45.4%	1,405,570	51.00%	50.2%	114,294	115,099	704,941	717,970	(1.8%)	(806)	(13,029)	121,360
<b>Caribbean</b>	<b>9F</b>	40,000	15.00%	17.0%	40,000	15.00%	17.0%	-	3,400	6,804	20,400	(66.6%)	(3,400)	(13,596)	3,816
<b>Total Region 9</b>		<b>7,906,411</b>	<b>45.77%</b>	<b>43.6%</b>	<b>7,526,281</b>	<b>45.86%</b>	<b>45.8%</b>	<b>550,330</b>	<b>616,464</b>	<b>3,447,576</b>	<b>3,819,613</b>	<b>(9.7%)</b>	<b>(66,134)</b>	<b>(372,037)</b>	<b>478,738</b>
<b>Total</b>		<b>\$ 69,035,019</b>	<b>50.68%</b>	<b>42.8%</b>	<b>\$ 66,041,888</b>	<b>50.52%</b>	<b>44.7%</b>	<b>\$ 4,877,446</b>	<b>\$ 5,305,694</b>	<b>\$ 29,512,515</b>	<b>\$ 31,279,824</b>	<b>(5.6%)</b>	<b>(\$428,249)</b>	<b>\$ (1,767,308)</b>	<b>5,991,906</b>

\* Includes additional 2008 mission support remitted in 2009.

**Evangelical Lutheran Church in America  
Synodical Mission Support By Month  
2002 - 2009**



### Mission Support Received In Preceding 12 Months Through July 2009

