

Evangelical Lutheran Church in America
SYNOICAL REMITTANCES
for the period ending
January 31, 2010

		ORIGINAL PLAN			REVISED ESTIMATE			CURRENT PERIOD		YEAR-TO-DATE			\$ VARIANCE		SPECIFIC MISSION SUPPORT
		AMOUNT	MS%	% REC'D	AMOUNT	MS%	% REC'D	2009	2008	2009	2008	% Vary	Monthly	Y-T-D	
Alaska	1A	\$ 182,839	38.00%	91.6%	\$ 178,600	38.00%	93.7%	\$ 22,231	\$ 22,810	\$ 167,429	\$ 183,650	(8.8%)	(579)	(16,221)	27,780
N.W. Wash	1B	671,000	45.50%	93.5%	682,500	45.50%	91.9%	62,828	66,056	627,055	657,906	(4.7%)	(3,228)	(30,851)	218,931
S.W. Wash	1C	484,500	38.00%	85.7%	484,500	38.00%	85.7%	34,519	37,582	415,250	420,304	(1.2%)	(3,063)	(5,053)	(36,282)
E. Wash / Id	1D	411,450	39.00%	72.7%	397,800	39.00%	75.2%	30,840	61,415	299,056	346,083	(13.6%)	(30,576)	(47,027)	53,362
Oregon	1E	551,880	42.00%	81.2%	505,055	41.50%	88.7%	38,107	52,110	448,049	499,094	(10.2%)	(14,004)	(51,044)	78,062
Montana	1F	455,000	39.40%	92.9%	455,000	39.40%	92.9%	52,640	34,380	422,558	439,206	(3.8%)	18,260	(16,648)	65,268
Total Region 1		2,756,669	40.81%	86.3%	2,703,455	40.73%	88.0%	241,164	274,354	2,379,397	2,546,242	(6.6%)	(33,189)	(166,845)	407,120
Sierra Pacific	2A	1,300,500	51.00%	82.5%	1,300,500	51.00%	82.5%	137,194	159,542	1,073,401	1,153,372	(6.9%)	(22,348)	(79,970)	177,765
SW California	2B	765,000	51.00%	78.8%	686,000	49.00%	87.9%	34,388	49,275	603,114	737,508	(18.2%)	(14,888)	(134,395)	241,728
Pacifica	2C	1,199,377	55.00%	80.3%	1,155,763	53.00%	83.3%	71,777	99,054	962,765	1,165,445	(17.4%)	(27,277)	(202,680)	241,324
Grand Canyon	2D	1,504,500	51.00%	74.7%	1,351,500	51.00%	83.1%	86,558	95,122	1,123,714	1,297,867	(13.4%)	(8,563)	(174,153)	276,354
Rocky Mtn.	2E	1,750,000	50.00%	77.2%	1,500,000	50.00%	90.1%	117,318	137,978	1,351,639	1,494,518	(9.6%)	(20,660)	(142,879)	336,114
Total Region 2		6,519,377	51.41%	78.5%	5,993,763	50.88%	85.3%	447,235	540,971	5,114,633	5,848,710	(12.6%)	(93,736)	(734,077)	1,273,284
W. No. Dak	3A	395,000	41.49%	97.5%	385,140	42.00%	100.0%	50,335	46,039	385,040	385,140	(0.0%)	4,296	(100)	102,875
E. No. Dak	3B	561,700	41.00%	73.3%	480,000	40.00%	85.7%	43,993	63,397	411,523	450,112	(8.6%)	(19,403)	(38,589)	110,768
South Dak	3C	939,120	42.00%	91.1%	914,546	42.00%	93.5%	45,420	51,783	855,362	890,364	(3.9%)	(6,363)	(35,002)	264,569
N.W. Minn	3D	956,250	51.00%	82.9%	867,000	51.00%	91.4%	104,692	116,224	792,596	859,819	(7.8%)	(11,532)	(67,223)	157,518
N.E. Minn	3E	710,500	49.00%	89.2%	681,000	49.00%	93.1%	72,122	91,575	633,709	668,898	(5.3%)	(19,453)	(35,189)	231,455
S.W. Minn	3F	1,293,555	52.50%	91.4%	1,293,555	52.50%	91.4%	102,402	169,056	1,182,179	1,223,526	(3.4%)	(66,654)	(41,347)	386,526
Mpls Area	3G	2,090,000	55.00%	90.0%	2,090,000	55.00%	90.0%	403,251	330,193	1,881,702	1,993,138	(5.6%)	73,057	(111,436)	517,560
St. Paul Area	3H	1,179,000	50.00%	92.7%	1,128,000	50.00%	96.9%	156,653	106,496	1,092,985	1,137,945	(4.0%)	50,157	(44,960)	202,457
S.E. Minn	3I	1,206,450	52.50%	90.4%	1,144,500	52.50%	95.3%	141,650	170,997	1,091,183	1,105,444	(1.3%)	(29,347)	(14,261)	305,468
Total Region 3		9,331,575	49.63%	89.2%	8,983,741	49.68%	92.7%	1,120,518	1,145,760	8,326,280	8,714,386	(4.5%)	(25,242)	(388,107)	2,279,196

Evangelical Lutheran Church in America
SYNOICAL REMITTANCES
for the period ending
January 31, 2010

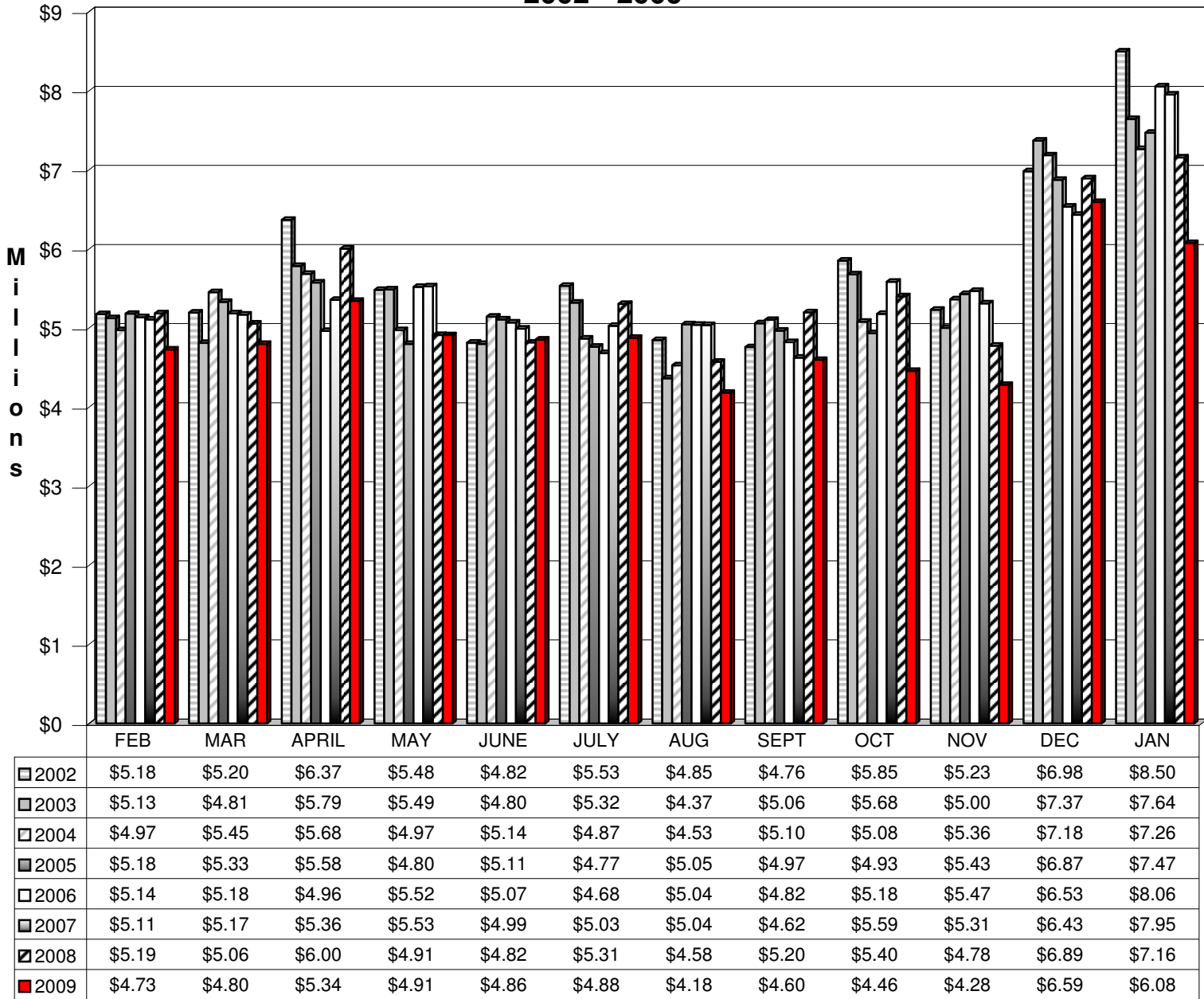
		ORIGINAL PLAN			REVISED ESTIMATE			CURRENT PERIOD		YEAR-TO-DATE			\$ VARIANCE		SPECIFIC MISSION SUPPORT
		AMOUNT	MS%	% REC'D	AMOUNT	MS%	% REC'D	2009	2008	2009	2008	% Vary	Monthly	Y-T-D	
Nebraska	4A	2,365,500	57.00%	97.5%	2,365,500	57.00%	97.5%	194,454	244,388	2,306,834	2,464,472	(6.4%)	(49,934)	(157,638)	432,200
Central States	4B	1,166,000	53.00%	93.4%	1,174,654	53.00%	92.7%	71,998	117,270	1,089,488	1,179,940	(7.7%)	(45,272)	(90,452)	139,212
Ark/Ok	4C	293,983	42.70%	84.8%	284,504	42.80%	87.6%	31,404	27,934	249,200	276,060	(9.7%)	3,470	(26,860)	33,542
N Tx / N La	4D	669,619	46.00%	94.4%	655,354	46.50%	96.4%	72,358	60,091	632,001	629,460	0.4%	12,267	2,541	113,308
S.W. Tex	4E	1,080,750	55.00%	94.3%	1,188,825	55.00%	85.7%	79,634	52,966	1,018,663	1,079,903	(5.7%)	26,668	(61,240)	187,391
Tx.-La. Gulf Coa:	4F	800,000	50.00%	90.7%	800,000	50.16%	90.7%	59,598	77,329	725,834	767,858	(5.5%)	(17,731)	(42,023)	128,349
Total Region 4		6,375,852	52.87%	94.5%	6,468,837	53.04%	93.1%	509,446	579,977	6,022,020	6,397,693	(5.9%)	(70,532)	(375,672)	1,034,002
Metro Chicago	5A	2,110,366	55.10%	90.0%	1,975,993	55.00%	96.1%	233,771	274,708	1,898,316	1,946,791	(2.5%)	(40,938)	(48,475)	313,349
No. Illinois	5B	1,614,250	55.00%	88.6%	1,508,518	55.00%	94.8%	166,212	167,246	1,429,605	1,558,260	(8.3%)	(1,034)	(128,655)	346,657
Cen. So. Ill	5C	1,078,000	56.00%	90.5%	1,078,000	56.00%	90.5%	77,839	112,477	975,393	1,085,194	(10.1%)	(34,638)	(109,801)	196,542
S.E. Iowa	5D	1,776,085	53.50%	88.8%	1,543,700	53.50%	102.2%	186,704	164,237	1,577,321	1,695,355	(7.0%)	22,467	(118,034)	207,187
West Iowa	5E	613,800	49.50%	78.9%	624,690	42.90%	77.5%	101,940	105,078	484,440	609,101	(20.5%)	(3,138)	(124,661)	182,176
N.E. Iowa	5F	798,000	42.00%	91.8%	798,000	42.00%	91.8%	239,998	270,926	732,668	796,773	(8.0%)	(30,928)	(64,105)	318,836
N. Great Lakes	5G	564,425	53.50%	92.4%	535,535	53.50%	97.3%	31,877	30,114	521,268	548,111	(4.9%)	1,762	(26,843)	241,116
NW of Wisc	5H	1,029,022	58.00%	77.6%	812,900	55.00%	98.2%	108,681	105,374	798,359	856,957	(6.8%)	3,307	(58,598)	250,065
E.C. Wisc	5I	1,072,500	55.00%	87.2%	1,017,500	55.00%	91.9%	120,761	154,477	935,552	1,023,157	(8.6%)	(33,716)	(87,604)	528,727
Grtr Milwaukee	5J	1,600,000	61.00%	90.4%	1,442,400	60.10%	100.3%	160,619	217,571	1,446,307	1,533,346	(5.7%)	(56,952)	(87,039)	299,175
SC of Wisc	5K	1,072,000	57.90%	85.1%	1,072,000	57.90%	85.1%	82,446	140,956	911,784	989,631	(7.9%)	(58,510)	(77,847)	238,008
LaCrosse (W)	5L	480,000	55.00%	96.2%	475,000	55.00%	97.3%	11,861	9,329	461,944	490,754	(5.9%)	2,531	(28,809)	159,989
Total Region 5		13,808,448	54.63%	88.2%	12,884,236	53.81%	94.5%	1,522,708	1,752,493	12,172,959	13,133,429	(7.3%)	(229,785)	(960,470)	3,281,827
SE Mich	6A	980,500	53.00%	67.5%	726,880	44.00%	91.0%	48,663	56,441	661,744	746,646	(11.4%)	(7,778)	(84,902)	76,898
NW Lower Mich	6B	994,500	51.00%	85.8%	984,300	51.00%	86.7%	83,275	80,137	853,234	934,574	(8.7%)	3,138	(81,340)	138,855 *
Ind / Ky	6C	1,400,000	51.00%	86.9%	1,390,500	51.50%	87.5%	144,709	164,220	1,217,091	1,368,840	(11.1%)	(19,511)	(151,748)	217,315 *
N.W. Ohio	6D	1,342,524	51.00%	82.8%	1,276,275	51.00%	87.1%	128,768	178,967	1,111,498	1,244,047	(10.7%)	(50,199)	(132,549)	298,046
N.E. Ohio	6E	1,160,000	50.00%	86.7%	1,029,000	49.00%	97.8%	105,282	117,926	1,006,085	1,097,428	(8.3%)	(12,644)	(91,342)	120,857
S. Ohio	6F	1,288,000	50.00%	79.9%	1,186,700	50.00%	86.7%	43,968	95,833	1,028,953	1,144,164	(10.1%)	(51,865)	(115,211)	187,890
Total Region 6		7,165,524	50.92%	82.0%	6,593,655	49.73%	89.2%	554,665	693,524	5,878,606	6,535,698	(10.1%)	(138,860)	(657,092)	1,039,861

Evangelical Lutheran Church in America
SYNOCDICAL REMITTANCES
for the period ending
January 31, 2010

		ORIGINAL PLAN			REVISED ESTIMATE			CURRENT PERIOD		YEAR-TO-DATE			\$ VARIANCE		SPECIFIC MISSION SUPPORT
		AMOUNT	MS%	% REC'D	AMOUNT	MS%	% REC'D	2009	2008	2009	2008	% Vary	Monthly	Y-T-D	
New Jersey	7A	1,350,000	50.00%	87.4%	1,200,000	50.00%	98.4%	187,417	209,895	1,180,358	1,245,126	(5.2%)	(22,478)	(64,768)	214,118
New England	7B	1,330,906	55.00%	86.3%	1,209,509	55.00%	94.9%	118,680	137,961	1,148,033	1,225,411	(6.3%)	(19,281)	(77,378)	125,267
Metro NY	7C	665,000	47.50%	92.1%	665,000	47.50%	92.1%	75,563	137,023	612,562	661,609	(7.4%)	(61,460)	(49,048)	81,557
Upstate NY	7D	868,800	48.00%	79.9%	774,550	47.00%	89.6%	86,372	99,566	693,795	768,742	(9.7%)	(13,194)	(74,947)	129,703
N.E. Penn	7E	1,600,600	53.00%	87.0%	1,428,000	51.00%	97.5%	144,711	208,468	1,392,788	1,556,125	(10.5%)	(63,756)	(163,338)	425,937
S.E. Penn	7F	1,524,800	53.50%	82.7%	1,444,550	53.50%	87.3%	16,998	81,779	1,260,381	1,422,975	(11.4%)	(64,781)	(162,594)	227,043
Slovak Zion	7G	36,000	30.00%	85.8%	36,000	30.51%	85.8%	5,400	7,266	30,900	37,266	(17.1%)	(1,866)	(6,366)	17,372
Total Region 7		7,376,106	51.51%	85.7%	6,757,609	50.94%	93.5%	635,141	881,957	6,318,816	6,917,255	(8.7%)	(246,816)	(598,439)	1,220,997
N.W. Penn	8A	465,000	49.50%	98.1%	465,000	49.50%	98.1%	32,293	38,134	456,363	467,389	(2.4%)	(5,841)	(11,027)	106,865
S.W. Penn	8B	1,300,000	55.00%	92.4%	1,300,000	55.00%	92.4%	93,238	114,099	1,201,318	1,324,925	(9.3%)	(20,861)	(123,607)	365,753
Allegheny	8C	515,000	50.00%	90.0%	499,337	48.52%	92.8%	46,343	64,738	463,248	499,337	(7.2%)	(18,395)	(36,088)	67,658
Lower Susq	8D	2,000,000	50.00%	88.9%	2,000,000	50.00%	88.9%	44,850	64,991	1,777,404	1,986,434	(10.5%)	(20,141)	(209,030)	556,882
Upper Susq	8E	621,000	50.00%	91.1%	625,000	50.00%	90.5%	62,487	82,112	565,860	596,551	(5.1%)	(19,625)	(30,691)	157,301
Del / Md	8F	1,472,057	53.00%	83.0%	1,472,057	53.00%	83.0%	123,843	150,509	1,221,580	1,404,452	(13.0%)	(26,666)	(182,872)	167,232
Metro DC	8G	1,071,125	55.00%	95.8%	1,071,125	55.00%	95.8%	131,268	123,541	1,026,363	1,050,932	(2.3%)	7,727	(24,569)	117,270
W Virg-W Mlyd	8H	350,875	51.50%	83.5%	342,872	51.50%	85.5%	29,010	28,353	293,152	340,170	(13.8%)	657	(47,018)	44,440
Total Region 8		7,795,057	52.03%	89.9%	7,775,391	51.93%	90.1%	563,331	666,476	7,005,289	7,670,190	(8.7%)	(103,144)	(664,902)	1,583,401
Virginia	9A	1,193,202	50.60%	85.2%	1,118,449	50.60%	90.9%	81,697	86,715	1,016,562	1,116,242	(8.9%)	(5,018)	(99,680)	192,056
N. Carolina	9B	2,000,000	39.89%	73.5%	2,000,000	40.50%	73.5%	500	141,667	1,470,233	2,066,667	(28.9%)	(141,167)	(596,434)	151,071
S. Carolina	9C	1,575,000	45.00%	86.5%	1,417,700	44.03%	96.1%	172,500	104,783	1,362,986	1,493,160	(8.7%)	67,717	(130,174)	241,000
Southeastern	9D	1,544,600	50.00%	82.2%	1,544,600	50.00%	82.2%	110,382	136,695	1,270,370	1,371,384	(7.4%)	(26,312)	(101,014)	101,245
Florida-Bahamas	9E	1,553,609	51.00%	86.0%	1,405,570	51.00%	95.1%	113,454	148,281	1,336,275	1,439,470	(7.2%)	(34,828)	(103,194)	263,844
Caribbean	9F	40,000	15.00%	65.5%	40,000	15.00%	65.5%	3,799	4,888	26,201	36,400	(28.0%)	(1,089)	(10,199)	5,667
Total Region 9		7,906,411	45.77%	82.0%	7,526,319	45.67%	86.1%	482,332	623,029	6,482,627	7,523,323	(13.8%)	(140,697)	(1,040,695)	954,883
Total		\$69,035,019	50.68%	86.5%	\$ 65,687,006	50.52%	90.9%	\$ 6,076,539	\$ 7,158,541	\$ 59,700,627	\$ 65,286,926	(8.6%)	(\$1,082,001)	\$ (5,586,299)	13,074,571

** Includes additional 2008 mission support remitted in 2009.*

Evangelical Lutheran Church in America Synodical Mission Support By Month 2002 - 2009



Mission Support Received In Preceding 12 Months Through January 2010

