

Evangelical Lutheran Church in America
SYNODICAL REMITTANCES
for the period ending
January 31, 2011

	MISSION SUPPORT										OTHER REMITTANCES THROUGH SYNODS			
	2009	2010 MS PLAN		CURRENT MONTH		YEAR-TO-DATE			\$ VARIANCE		World	Missionary	Other	
	MS%	AMOUNT	MS%	2010	2009	2010	2009	% Vary	Monthly	Y-T-D	Hunger	Sponsorship		
Alaska	1A	38.00%	\$ 159,120	39.00%	\$ 29,190	\$ 22,231	163,080	\$ 167,429	(2.6%)	6,959	(4,348)	\$ 16,847	\$ 991	\$ 19,901
N.W. Wash	1B	45.50%	627,900	45.50%	76,571	62,828	602,267	627,055	(4.0%)	13,743	(24,788)	162,584	17,028	99,352
S.W. Wash	1C	38.00%	423,500	38.50%	32,059	34,519	347,497	415,250	(16.3%)	(2,460)	(67,754)	98,131	12,607	52,170
E. Wash / Id	1D	39.00%	229,500	30.00%	27,562	30,840	236,844	299,056	(20.8%)	(3,277)	(62,212)	27,825	8,895	15,159
Oregon	1E	42.00%	420,000	42.00%	47,734	38,107	385,750	448,049	(13.9%)	9,627	(62,299)	108,098	13,710	98,346
Montana	1F	39.40%	414,750	39.50%	51,192	52,640	368,598	422,558	(12.8%)	(1,449)	(53,961)	100,953	28,125	65,907
Total Region 1		40.81%	2,274,770	39.89%	264,308	241,164	2,104,035	2,379,397	(11.6%)	23,144	(275,362)	514,439	81,355	350,834
Sierra Pacific	2A	51.00%	1,081,500	51.50%	125,906	137,194	891,951	1,073,401	(16.9%)	(11,289)	(181,451)	84,518	25,340	192,882
SW California	2B	51.00%	686,000	49.00%	35,056	34,388	529,878	603,114	(12.1%)	668	(73,235)	194,737	28,634	215,121
Pacifica	2C	55.00%	832,000	52.00%	70,769	71,777	765,311	962,765	(20.5%)	(1,009)	(197,455)	113,232	23,642	147,124
Grand Canyon	2D	51.00%	950,000	50.00%	77,108	86,558	901,857	1,123,714	(19.7%)	(9,450)	(221,857)	129,682	34,569	89,307
Rocky Mtn.	2E	50.00%	1,258,750	50.00%	105,557	117,318	1,262,965	1,351,639	(6.6%)	(11,761)	(88,674)	263,617	36,974	264,963
Total Region 2		51.41%	4,808,250	50.52%	414,395	447,235	4,351,962	5,114,633	(14.9%)	(32,840)	(762,671)	785,787	149,158	909,396
W. No. Dak	3A	41.49%	379,950	42.50%	63,428	50,335	379,950	385,040	(1.3%)	13,093	(5,090)	44,661	48,923	22,753
E. No. Dak	3B	41.00%	440,000	40.00%	64,834	43,993	407,064	411,523	(1.1%)	20,840	(4,460)	56,906	46,371	63,852
South Dak	3C	42.00%	727,413	43.00%	44,443	45,420	692,431	855,362	(19.0%)	(977)	(162,931)	168,311	56,349	91,096
N.W. Minn	3D	51.00%	765,000	51.00%	66,779	104,692	628,582	792,596	(20.7%)	(37,913)	(164,014)	15,220	47,342	92,620
N.E. Minn	3E	49.00%	632,100	49.00%	83,689	72,122	594,952	633,709	(6.1%)	11,567	(38,756)	161,647	31,639	72,521
S.W. Minn	3F	52.50%	1,162,350	52.50%	150,074	102,402	1,075,108	1,182,179	(9.1%)	47,671	(107,071)	193,949	176,563	105,470
Mpls Area	3G	55.00%	1,870,000	55.00%	417,702	403,251	1,790,191	1,881,702	(4.9%)	14,452	(91,511)	251,830	89,855	129,151
St. Paul Area	3H	50.00%	1,070,000	50.00%	126,918	156,653	1,024,721	1,092,985	(6.2%)	(29,735)	(68,264)	69,208	61,274	71,131
S.E. Minn	3I	52.50%	1,001,175	52.50%	141,400	141,650	991,427	1,091,183	(9.1%)	(250)	(99,756)	179,899	72,556	101,302
Total Region 3		49.63%	8,047,988	49.87%	1,159,266	1,120,518	7,584,426	8,326,280	(8.9%)	38,748	(741,854)	1,141,632	630,871	749,898

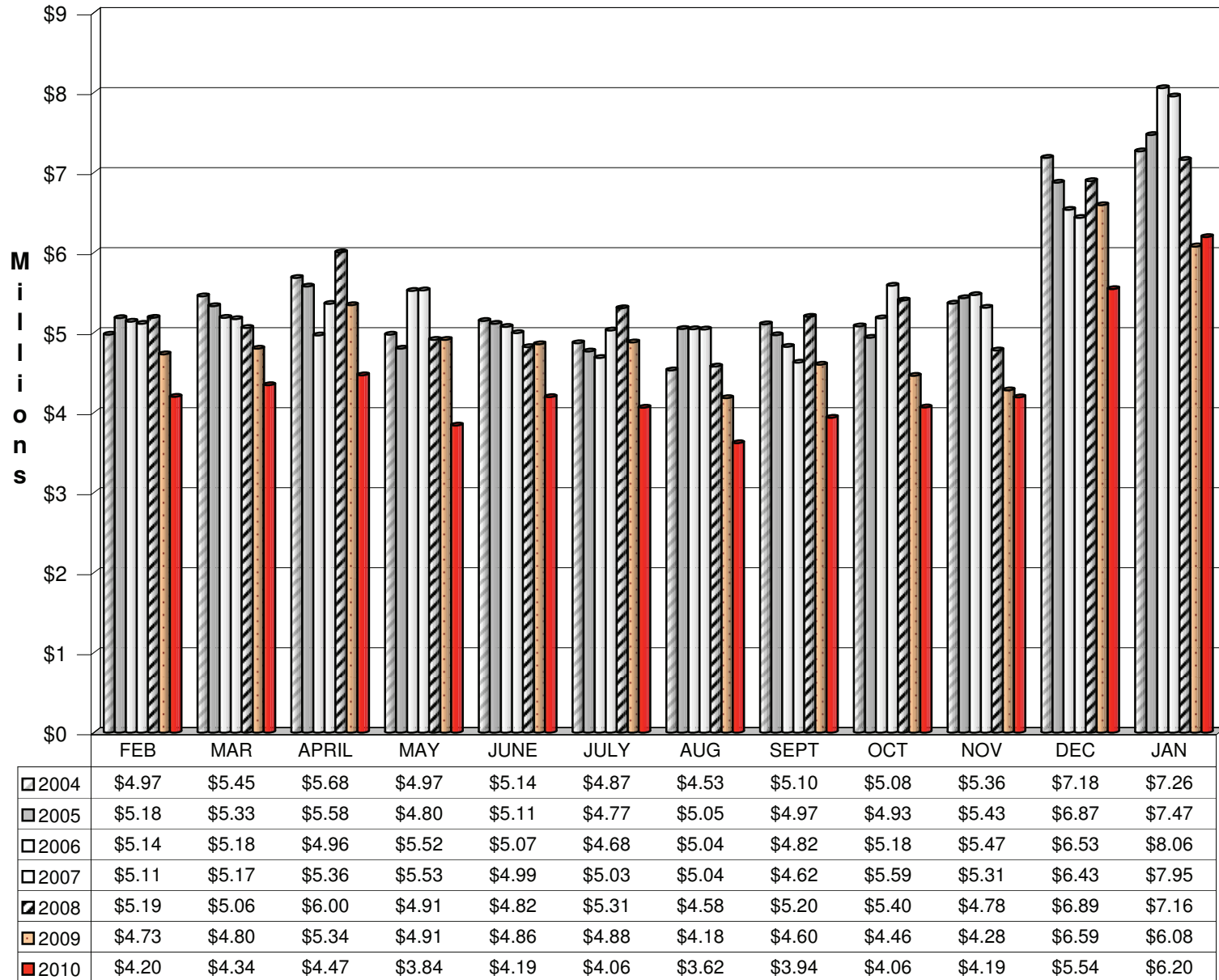
Evangelical Lutheran Church in America
SYNODICAL REMITTANCES
for the period ending
January 31, 2011

MISSION SUPPORT											OTHER REMITTANCES THROUGH SYNODS			
		2009	2010 MS PLAN		CURRENT MONTH		YEAR-TO-DATE			\$ VARIANCE		World Hunger	Missionary Sponsorship	Other
		MS%	AMOUNT	MS%	2010	2009	2010	2009	% Vary	Monthly	Y-T-D			
Nebraska	4A	57.00%	2,000,000	57.00%	222,309	194,454	2,013,879	2,306,834	(12.7%)	27,855	(292,955)	177,055	11,786	133,427
Central States	4B	53.00%	930,818	51.00%	81,563	71,998	950,714	1,089,488	(12.7%)	9,565	(138,774)	102,562	19,800	64,240
Ark/Ok	4C	42.70%	238,463	40.20%	20,986	31,404	224,010	249,200	(10.1%)	(10,418)	(25,190)	23,940	6,379	53,262
N Tx / N La	4D	46.00%	662,700	47.00%	87,172	72,358	579,102	632,001	(8.4%)	14,814	(52,899)	52,648	12,499	35,987
S.W. Tex	4E	55.00%	737,000	50.00%	69,714	79,634	763,323	1,018,663	(25.1%)	(9,920)	(255,340)	129,426	3,347	66,332
Tx.-La. Gulf Coast	4F	50.00%	750,000	50.00%	51,587	59,598	678,177	725,834	(6.6%)	(8,011)	(47,657)	102,308	23,691	23,018
Total Region 4		52.87%	5,318,981	51.59%	533,331	509,446	5,209,205	6,022,020	(13.5%)	23,885	(812,815)	587,938	77,501	376,267
Metro Chicago	5A	55.10%	1,831,195	55.00%	205,846	233,771	1,762,476	1,898,316	(7.2%)	(27,924)	(135,840)	209,655	55,049	118,268
No. Illinois	5B	55.00%	1,306,250	55.00%	133,876	166,212	1,281,869	1,429,605	(10.3%)	(32,336)	(147,737)	257,020	55,297	74,720
Cen. So. Ill	5C	56.00%	924,000	56.00%	73,251	77,839	862,538	975,393	(11.6%)	(4,588)	(112,855)	140,621	37,494	83,782
S.E. Iowa	5D	53.50%	1,566,480	53.50%	170,430	186,704	1,415,853	1,577,321	(10.2%)	(16,274)	(161,468)	232,719	27,323	52,343
West Iowa	5E	49.50%	351,048	35.10%	104,234	101,940	329,234	484,440	(32.0%)	2,294	(155,206)	90,026	48,370	60,587
N.E. Iowa	5F	42.00%	680,000	42.50%	318,770	239,998	597,813	732,668	(18.4%)	78,772	(134,855)	172,495	47,369	102,706
N. Great Lakes	5G	53.50%	450,000	50.00%	31,087	31,877	441,259	521,268	(15.3%)	(790)	(80,009)	119,504	32,211	84,611
NW of Wisc	5H	58.00%	805,750	55.00%	115,163	108,681	748,382	798,359	(6.3%)	6,482	(49,977)	81,148	72,459	58,959
E.C. Wisc	5I	55.00%	885,398	55.00%	108,488	120,761	874,508	935,552	(6.5%)	(12,273)	(61,044)	196,297	84,256	181,328
Grtr Milwaukee	5J	61.00%	1,341,733	60.10%	151,404	160,619	1,351,367	1,446,307	(6.6%)	(9,215)	(94,940)	160,221	28,777	103,291
SC of Wisc	5K	57.90%	911,200	55.00%	41,533	82,446	796,253	911,784	(12.7%)	(40,914)	(115,532)	158,045	25,389	175,725
LaCrosse (W)	5L	55.00%	462,000	55.00%	5,429	11,861	425,130	461,944	(8.0%)	(6,432)	(36,814)	50,631	3,357	58,756
Total Region 5		54.63%	11,515,054	53.34%	1,459,510	1,522,708	10,886,682	12,172,959	(10.6%)	(63,198)	(1,286,277)	1,868,382	517,352	1,155,076
SE Mich	6A	44.00%	690,000	45.00%	50,629	48,663	557,360	661,744	(15.8%)	1,966	(104,384)	44,431	16,624	82,761
NW Lower Mich	6B	51.00%	771,000	50.00%	85,212	83,275	748,816	853,234	(12.2%)	1,937	(104,417)	120,984	26,409	31,502
Ind / Ky	6C	51.00%	1,133,000	51.50%	134,432	144,709	1,030,028	1,217,091	(15.4%)	(10,278)	(187,063)	200,381	25,954	128,793
N.W. Ohio	6D	51.00%	1,093,440	51.00%	125,290	128,768	1,000,513	1,111,498	(10.0%)	(3,478)	(110,986)	95,770	71,689	115,043
N.E. Ohio	6E	50.00%	869,750	49.00%	85,709	105,282	870,902	1,006,085	(13.4%)	(19,573)	(135,184)	42,627	6,537	18,091
S. Ohio	6F	50.00%	800,000	40.00%	80,868	43,968	753,594	1,028,953	(26.8%)	36,900	(275,359)	110,957	21,067	169,865
Total Region 6		50.92%	5,357,190	47.86%	562,139	554,665	4,961,212	5,878,606	(15.6%)	7,475	(917,393)	615,149	168,280	546,055

Evangelical Lutheran Church in America
SYNODICAL REMITTANCES
for the period ending
January 31, 2011

MISSION SUPPORT											OTHER REMITTANCES THROUGH SYNODS			
	2009 MS%	2010 MS PLAN		CURRENT MONTH		YEAR-TO-DATE			\$ VARIANCE		World Hunger	Missionary Sponsorship	Other	
		AMOUNT	MS%	2010	2009	2010	2009	% Vary	Monthly	Y-T-D				
New Jersey	7A	50.00%	1,150,000	50.00%	199,979	187,417	1,087,023	1,180,358	(7.9%)	12,562	(93,335)	84,744	6,672	191,979
New England	7B	55.00%	1,115,053	54.00%	128,336	118,680	1,081,086	1,148,033	(5.8%)	9,656	(66,947)	55,786	10,107	61,081
Metro NY	7C	47.50%	648,000	48.00%	66,752	75,563	546,335	612,562	(10.8%)	(8,811)	(66,227)	52,139	4,630	53,688
Upstate NY	7D	48.00%	668,820	47.10%	74,647	86,372	627,751	693,795	(9.5%)	(11,725)	(66,043)	79,225	9,929	51,479
N.E. Penn	7E	53.00%	1,404,000	52.00%	131,784	144,711	1,384,677	1,392,788	(0.6%)	(12,927)	(8,110)	294,182	34,186	188,491
S.E. Penn	7F	53.50%	1,297,375	53.50%	105,528	16,998	1,253,383	1,260,381	(0.6%)	88,530	(6,998)	151,690	28,503	123,526
Slovak Zion	7G	30.00%	36,000	30.00%	6,026	5,400	24,591	30,900	(20.4%)	626	(6,309)	7,928	1,389	13,586
Total Region 7		51.51%	6,319,248	51.04%	713,053	635,141	6,004,847	6,318,816	(5.0%)	77,912	(313,968)	725,694	95,417	683,831
N.W. Penn	8A	49.50%	468,225	50.00%	40,610	32,293	436,041	456,363	(4.5%)	8,316	(20,321)	93,875	8,831	27,909
S.W. Penn	8B	55.00%	1,100,000	55.00%	150,531	93,238	1,018,795	1,201,318	(15.2%)	57,293	(182,523)	130,317	43,574	108,444
Allegheny	8C	50.00%	450,000	50.00%	62,510	46,343	394,474	463,248	(14.8%)	16,167	(68,775)	111,461	47,010	92,172
Lower Susq	8D	50.00%	1,610,000	46.00%	42,316	44,850	1,502,495	1,777,404	(15.5%)	(2,534)	(274,909)	349,306	99,708	134,291
Upper Susq	8E	50.00%	601,000	50.00%	61,544	62,487	536,659	565,860	(5.2%)	(943)	(29,201)	77,427	17,206	65,816
Del / Md	8F	53.00%	1,245,500	53.00%	130,307	123,843	1,139,880	1,221,580	(6.7%)	6,465	(81,700)	115,466	11,611	57,175
Metro DC	8G	55.00%	1,045,000	55.00%	125,047	131,268	999,108	1,026,363	(2.7%)	(6,220)	(27,255)	51,305	18,940	93,102
W Virg-W Mlyd	8H	51.50%	255,683	45.00%	21,300	29,010	256,420	293,152	(12.5%)	(7,710)	(36,733)	31,510	1,235	37,024
Total Region 8		52.03%	6,775,408	50.73%	634,165	563,331	6,283,873	7,005,289	(10.3%)	70,834	(721,416)	960,665	248,114	615,934
Virginia	9A	50.60%	628,949	35.10%	59,254	81,697	658,965	1,016,562	(35.2%)	(22,443)	(357,597)	138,814	7,116	71,820
N. Carolina	9B	39.89%	1,865,000	39.26%	155,192	500	1,262,714	1,470,233	(14.1%)	154,692	(207,519)	135,639	13,761	82,305
S. Carolina	9C	45.00%	1,416,435	45.00%	80,953	172,500	1,268,389	1,362,986	(6.9%)	(91,547)	(94,597)	158,291	59,278	241,472
Southeastern	9D	50.00%	1,050,000	50.00%	104,265	110,382	1,086,077	1,270,370	(14.5%)	(6,117)	(184,293)	96,019	34,619	98,266
Florida-Bahamas	9E	51.00%	1,144,618	51.13%	53,179	113,454	949,728	1,336,275	(28.9%)	(60,275)	(386,548)	160,231	24,650	50,802
Caribbean	9F	15.00%	30,000	12.50%	2,500	3,799	33,799	26,201	29.0%	(1,299)	7,598	3,197		230
Total Region 9		45.77%	6,135,002	43.00%	455,343	482,332	5,259,672	6,482,627	(18.9%)	(26,989)	(1,222,955)	692,190	139,424	544,896
Total		50.52%	\$ 56,551,891	49.39%	\$ 6,195,510	\$ 6,076,539	\$ 52,645,915	\$ 59,700,627	(11.8%)	\$ 118,970	\$ (7,054,713)	\$ 7,891,877	\$ 2,107,473	\$ 5,932,186

Evangelical Lutheran Church in America Synodical Mission Support By Month 2002 - 2010



Mission Support Received In Preceding 12 Months Through January 2011

