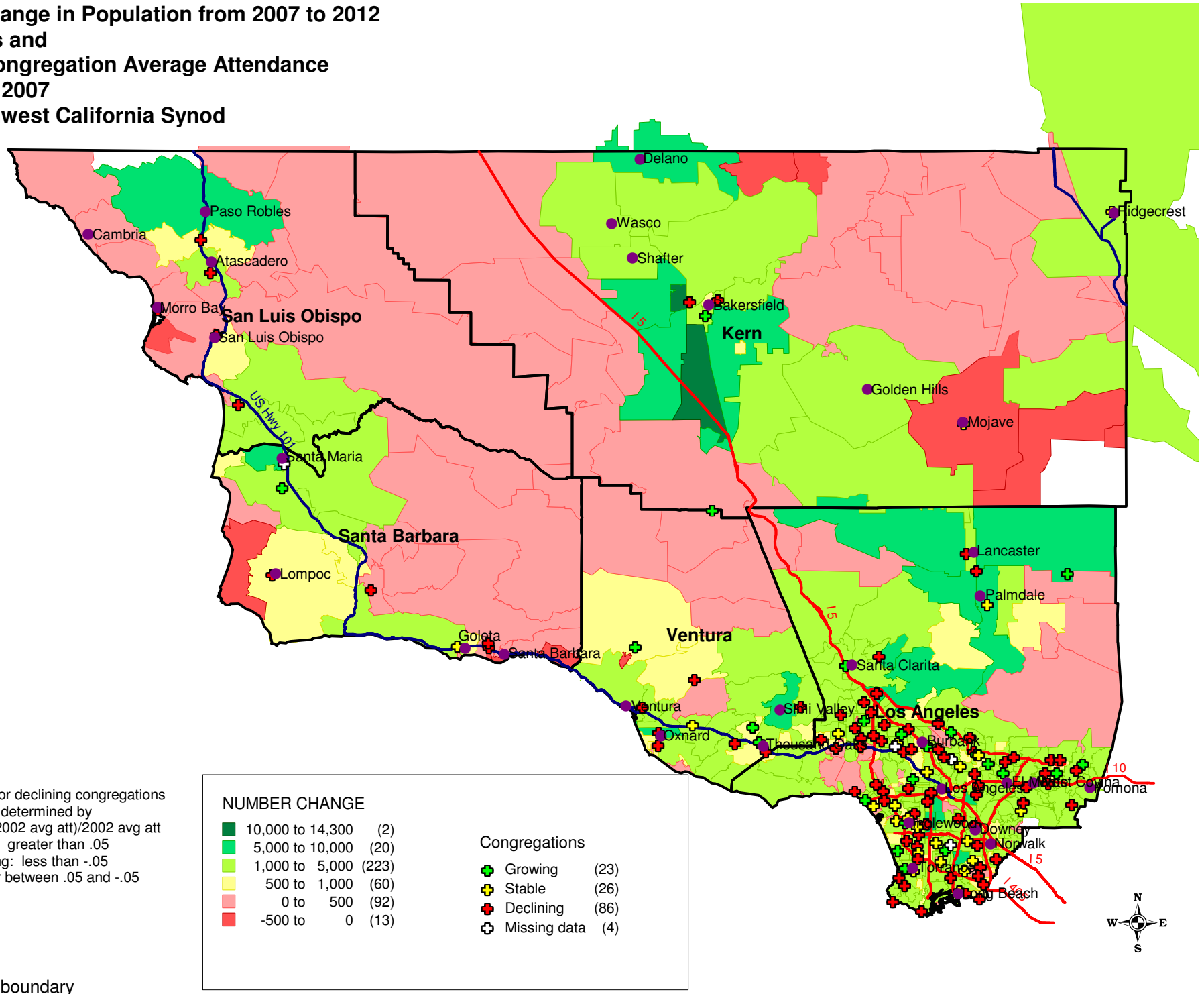


**Projected Change in Population from 2007 to 2012
by ZIP Codes and
Change in Congregation Average Attendance
from 2002 to 2007
for the Southwest California Synod**



*Growing, stable or declining congregations were determined by $(2007 \text{ avg att} - 2002 \text{ avg att}) / 2002 \text{ avg att}$
 Growth: greater than .05
 Declining: less than -.05
 Stable: at or between .05 and -.05

