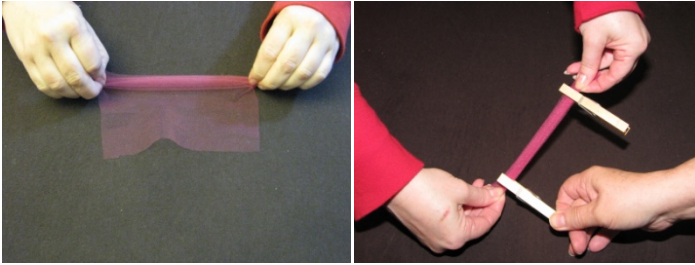


INSTRUCTIONS FOR MAKING A NET CORSAGE

Step 1: Cut 6" x 8" pieces of white net material and colored toile.

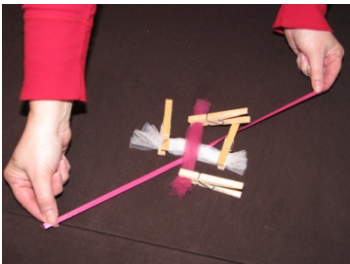
Step 2: Accordion pleat each the two pieces with approximately ½" pleats. Secure the pleats with a clothes pin, paper clip, or similar device.



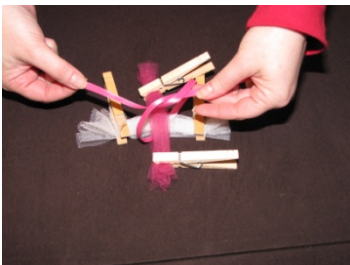
Step 3: Lay the pleated please across one another at A right angle to form a cross.



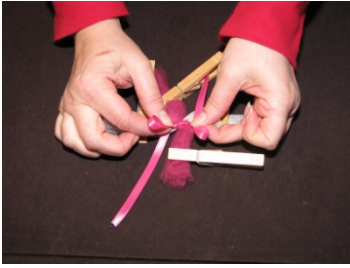
Step 4: Cut an approximately 18" long piece of ¼" wide ribbon of a desired color. Place the cut ribbon under the cross at approximately a 45 degree angle.



Step 5: Tie a simple knot in the ribbon making sure to leave approximately the same length of ribbon on each side of the knot. Pull the knot tight to secure the ribbon to the cross.



Step 6: Form a loop in each ribbon end adjacent to the knot and then tie the loops into a bow. The loop should be approximately the same size.



Step 7: Before removing the clothes pins or other securements, make two cuts in the in each end of the pleated material (both the net and the toile). Each cut should be at an approximately 45 degree angle so that the ends are pointed in the shape of a triangle. Trim the ends of the ribbon as desired.



Step 8: Remove the clothes pins and fan the net and the toile into a circle.



Step 9: Secure a small safety pin to the back of the bow with hot glue.



The finished bow should appear as shown below.

